

COMMUNITY News

August 20, 2008
Vol. 87 No. 34

Inside... **COUPON CRAZY**

Established 1921 - Weekly for 87 Years
Family Owned & Operated
Serving St. Louis & St. Charles Counties

www.mycnews.com

**Two events
Aug. 23 and 24
promote clean
water education,
restoration and
recreation.**

Ready... Set... Paddle!

By Shelly A. Schneider

There is still time to register for the Second Annual Race for the Rivers or Clean Water Challenge. The Race for the Rivers is a staged canoe and kayak race that covers 65 miles of the scenic Missouri River. The race begins in Washington, Mo. and ends at the confluence of the Missouri and Mississippi Rivers. The event is sponsored by Greenway Network, Inc., a grassroots nonprofit organization that strives to conserve natural resources and the area's watersheds. Charlene Waggoner, president of Greenway Network, Inc., said canoers and kayakers could register up until the close of business on Friday, Aug. 22. The best way to register is online at www.racefortherivers.org.

"Race for the Rivers is a two-day race for the serious paddler with strong endurance and a desire to compete," Waggoner said. "The first day's race ends in St. Charles' Frontier Park at the Race for the Rivers Festival."

Day two of the race includes a sprint to Columbia Bottom Conservation Area. This race is sanctioned by the United States Canoe Association.

"We have participants coming from all across Missouri, and from Kansas, Illinois, Georgia and Alabama," Waggoner said.

The Clean Water Challenge is for the experienced canoe or kayak paddler who has a desire to learn more about the rivers and how to care for them. This one-day race takes place on Saturday, August 23. Paddlers will compete for speed and accuracy as they travel 20 miles of the Missouri River from Weldon Spring to Frontier Park. Throughout the journey there will be tasks for paddlers to perform, including water quality monitoring. This race will be run with the assistance of the Missouri Department of Conservation.

"Most of the racers have their own boats, but this year we have a very generous livery, Twin Rivers Canoe, that is supplying canoes to many of our racers,"

See PADDLE page 2



Photo courtesy of Greenway Network

Movie Talk

Interview with Steve Coogan of "Hamlet 2"



Steve Coogan and Elisabeth Shue in "Hamlet 2." © 2008 Focus Features

See MOVIES page 16

IN THIS ISSUE

Cover story.	2
Old Town Florissant	5
Shelly Schneider.	6
Explore St. Charles	10, 11
Sports with Gary Baute.	15
Movie Review.	16
It's About St. Peters	16, 17
Classifieds	22, 23

2139 Bryan Valley Commercial Dr.
O'Fallon, MO 63366
P: 636-379-1775 • FX: 636-379-1632
E-Mail: cnews@centurytel.net

St. Louis County Library Knitters Warm Up America



St. Louis County Library knitting groups have joined forces with Warm Up America! to create and donate hand-made blankets to the needy. Eight branches will participate in the project through the end of 2008, with hopes of completing 10 full afghans.

Warm Up America! (WUA!) is a national organization made up of volunteers who create handmade afghans for the less fortunate. Volunteers donate their time

to crochet and knit 7" X 9" rectangles. Sections are either joined by individuals or groups in a community and donated locally or sent to WUA! headquarters for joining and distribution. Completed afghans are donated to victims of natural disasters, battered women's shelters, the homeless, and others in need.

St. Louis County Library hosts a number of knitting groups for all ages and skill levels. The following branches will participate in the Warm Up America!: Bridgeton Trails 314-291-7570; Daniel Boone 636-227-9630; Grand Glaize 636-225-6454; Indian Trails 314-428-5424; Mera-mec Valley 636-349-4981; Sachs 636-728-0001; Thornhill 314-878-7730; and Weber Road 314-638-2210.

If you are interested in joining one of the library's knitting groups or would like to contribute to the Warm Up America! project please contact one of the branches listed above.

More information about Warm Up America can be found at: <http://www.warmupamerica.com>

Program sites are accessible. Upon two weeks notice, accommodations will be made for persons with disabilities. Contact St. Louis County Library by phone 314-994-3300, (TDD\TTY) 314-994-9255 or visit www.slcl.org.



PADDLE from cover

Waggoner said.

To date there are about 50 boats and 70 people registered for the two races.

"The goal is to attract people to the river, and show them how it's affected our lives," Waggoner said. "The money raised will be used for clean water education, restoration and recreation projects. We are in critical need of money to restore the rivers and wetlands."

Greenway Network is also sponsoring a festival at Frontier Park on the St. Charles waterfront. The festival is the finish for the Clean Water Challenge race, and for day one of the Race for the Rivers participants. Festival hours are from noon to 6 p.m.

"The Clean Water Challenge folks will come in around noon or 12:30 p.m.," Waggoner said. "Most of the people coming in from Race for the Rivers will be out of the water by 4 or 5 p.m., but the festival continues to 6 p.m."

The community is invited to the festival to meet the racers, learn about competitive paddling and keep track of the race leaders on the leader board updated throughout the day in the park. Adventure and outdoor sports vendors, seven live bands, environmental educational displays and activities are all part of the festival.

"There's a lot of learning going on, and many hands-on activities," Waggoner said. "We had about 600 people at the festival last year, and we really didn't do much advertising. We just wanted to get the race going, take care of the racers and just see what happened at the festival."

Sculptures made with metal pulled from the Missouri River will be on display at the festival. Community members are also invited to stop by the quilting frame and help stitch a quilt.

"We participate in many festivals around the area, and we help people do sun printing on fabric," Waggoner said. "Some of the fabric pieces that are left behind are done so deliberately, and some are done so unfortunately. We'll have some quilters at the festival this year and the community is invited to come and take as many stitches as they wish. We want to link that to the need to remove invasive species from our rivers and wetlands."

More information on the festival and race registration is available on-line at www.racefortherivers.org. For more information on Greenway Network visit www.greenwaynetwork.org.

Overland Shade
 SINCE 1946
 636-477-8500
 5911 Suemandy Dr.
 St. Peters, MO 63376
 (Next to Mr. B's Pool Ctr.)
 314-427-5191
 8231 Midland Blvd.
 St. Louis, MO 63114
 (Corner of N&S and Midland)

Shades • Venetian Blinds • Woven Woods • Wood Blinds
 Shutters • 1" Mini Blinds • Vertical Blinds • Drapes

Visit: www.mycnews.com
 to find these **HYPERLINKED** ads
 Just click on the ad.

Abbey Heating & Cooling	Parents Without Partners
American Family Insurance	PC Plan-It
Baumann Chapel	Senior Helpers
Black Jack Fire Protection District	Shelly Schneider - Two Guys Talking
City of St. Peters - Rec-Plex	St. Catherine Retirement
Comfort Systems	St. Charles Community College
Corral Performing Arts Center	St. Charles County Parks
Dance Connection	St. Charles Fence and Deck
Disney on Ice - Disneyland Adventure	St. Charles Sports & P.T.
Dooley's Florist	Sun Loan Company
Elm Dental	Switch Fitness
EPC	The Meadows at Lake Saint Louis
Half Traks	Verlo Mattress
Huneke Homes	Villa at Riverwood
Jim Trenary Chevrolet	Village North Retirement
Lang Insurance	Wentzville Community Club
Lauer Chiropractic	Wholesale Flooring
Lou Fusz	Win Tickets - Disney on Ice
Muddpuppies	Wonder/Hostess
O'Fallon Dental Partners	YMCA
Overland Shade	

Advertisers...Ask about our **FREE** hyperlink feature.

COMMUNITY NEWS®

Huneke Publications, Inc.

2139 Bryan Valley Commercial Dr. PH: 636-379-1775
 O'Fallon, MO 63366 FX: 636-379-1632

Published weekly since 1921 and circulated through more than 650 newsstands in North and Northwest County, and St. Charles County.

Publisher/Editor
 Robert J. Huneke

Production Manager Donna M. Huneke	Contributing Writers Steve Bryan, Joe Morice
Production Assistants Rebecca Brockmann, Susan Powderly	Display Advertising Randy Davies, Heather Deatz, Susan Faust, Doug Garbs, Cyndi Hamby, Bob Huneke, Earl Link, Lori North, Heather Picker, John Spear - Sales Manager in St. Charles County
Senior Writer/Columnist Shelly Schneider	Classified Advertising Julie Rose Brooke N. Tolle
Staff Photographer Ray Rockwell	
Sports Columnist Gary Baute	

Circulation: Papers Unlimited, Trader Distribution

Community News is a Registered Trademark of Huneke Publications, Inc. Neither the advertiser nor the publisher is responsible or liable for misinformation, misprints, typographical errors, etc., herein contained. Huneke Publications, Inc. reserves the right to accept or reject all news and advertising copy which in the sole judgement and discretion of the publisher/editor is not suitable or deemed appropriate for publication. Copyright 2006 Huneke Publications, Inc. with all rights reserved. No part of the publications may be reproduced in any form without permission in writing from the publisher/editor. Publication of advertising contained herein does not necessarily constitute endorsement. Signed columns are the opinion of the writers and not necessarily the opinion of the publisher. Entire Contents Copyrighted.

3025 Boschertown Road • St. Charles
 (636) 949-9140

M-F 8 AM to 8 PM,
 Sat. 9 AM to 5 PM, Sun. 11 AM to 4 PM

50 years Verlo MATTRESS FACTORY STORES

CUT OUT THE MIDDLEMAN AND SAVE

FREE DELIVERY, SET-UP & REMOVAL
 With any mattress set purchase!

NO INTEREST OR PAYMENTS
 until January 2009
Expires 8/31/08
 With approved credit.

TWIN MATTRESSES Starting at \$89	MAGIC NITE Queen Set \$299 \$199 Twin Set \$259 Full Set	ROYAL EXTRA FIRM Queen Set \$399 \$269 Twin Set \$349 Full Set \$599 King Set	ROYAL FRESH Queen Set \$499 \$349 Twin Set \$449 Full Set \$699 King Set
	ESSENCE NO FLIP Queen Set \$599 \$399 Twin Set \$499 Full Set \$799 King Set	VITALITY NO FLIP Queen Set \$699 \$499 Twin Set \$599 Full Set \$899 King Set	TRANQUILITY NO FLIP Queen Set \$799 \$599 Twin Set \$699 Full Set \$999 King Set

Verlo-aire
Control Your Comfort

\$200 OFF* OR **No Interest for 18 Months**
With Approved Credit
 Expires: 8/31/08 *On any Verlo-aire® set purchase. One offer per purchase.

Verlo-pedic
Shape Your Comfort

Memory Foam Mattress

\$100 OFF†
Expires: 8/31/08 †On any Verlo-pedic® set purchase. One offer per purchase.

1-800-224-VERLO or visit our website at www.verlo.com

Saint Louis Zoo's Five Amur Tiger Cubs Make Public Debut

Five critically endangered Amur tigers, born at the Saint Louis Zoo on April 28, made their public debut on August 5. The five cubs – two males and three females – have been with their mother “Kalista” in an indoor maternity den at Big Cat Country. Now they will explore grass, trees and rocks in their outdoor habitat with their mother every day from 10 a.m. to 12 noon, weather permitting.

Although this is Kalista's first litter, she has proven to be an excellent mother. Normal litter size for a tigress is two or three cubs. Kalista has been busy nursing and caring for her five cubs. The cubs have grown from an average of two pounds to about 25 pounds.

Kalista is seven years old and came to the Saint Louis Zoo from the Philadelphia Zoo in 2003. Khuntami, the 16-year-old father, was born in the wilds of eastern Russia



and arrived in St. Louis from the Omaha Zoo in 2006. He is considered one of the most genetically valuable tigers in North America.

The Zoo's Amur tigers, formerly called Siberian tigers, are part of the Association of Zoos and Aquariums' Tiger Species Survival Plan (SSP). The Tiger SSP is responsible for maintaining a genetically healthy population of tigers in North American zoos – the Amur, Sumatran and

Malayan subspecies of tigers. There are approximately 300 tigers in the Tiger SSP and fewer than 500 living in small populations of far eastern Russia and northeast China. Loss of habitat due to logging activities, human encroachment, and poaching

New Life Skills Certificate Offered Oct. 14-15 in St. Louis for Trainers of At-Risk Adults and Youth

Program meets requirements for WIA-approved training

ST. LOUIS – Workplace and organizational educators, especially those who work with at-risk adults and teens, can learn a fun, fresh approach to teaching critical life skills through a new Dean's Certificate program offered by University of Missouri Extension and University of Missouri-St. Louis.

Participants will earn 1.2 Continuing Education Units (CEUs) for the 12-hour training, which will be offered October 14-15 at UM-St. Louis. The program will use the new, revised version of a proven life skills curriculum called *Tack-*

ling the Tough Skills™: A Curriculum Building Skills for Work and Life.

This certificate program will equip participants to teach critical life skills related to attitude, responsibility, communication, problem solving, preparing for the workplace, anger management, conflict resolution, critical thinking, self-esteem, teamwork, and dealing with stress.

Rosilee Trotta, LCSW, MU Extension urban youth and family specialist, is the book's author and the course instructor. The program meets requirements for training funded by

the Workforce Investment Act (WIA). The fee of \$275 includes a copy of the revised curriculum (\$75 value). The registration deadline is October 10.

The curriculum is being used to teach life skills to adults and teens around the world, including all 50 states, Washington, DC, and 15 countries.

Online registration is available at <http://www.umsl.edu/ce/toughskills>. For more information, contact Rosilee Trotta, 314-615-7637, or by e-mail, TrottaR@missouri.edu.

COUPON

SPEND \$8

**OR MORE IN ONE VISIT & RECEIVE
2 FREE Loaves of Variety Breads
or 4 Loaves of 20 oz. White Bread**

(excluding Raisin Bread and Baker's Inn)

Limit one Coupon. Not valid with other offers - Offer expires 9-15-08




- * Arnold, 1781 Jeffco Blvd: 636-282-4943
- * Brentwood, 8503 Manchester: 314-961-4328
- * 6301 N. Broadway: 314-385-1600
- * 4288 Chippewa: 314-664-5887
- * 8411 Gravois: 314-351-1093
- * Imperial, 6254 US Hwy. 61 & 67: 636-464-6790
- * 4530A Lemay Ferry: 314-892-0722
- * 8002 N. Lindbergh: 314-831-0844
- * W. County, 13753 Manchester: 314-821-5409
- * O'Fallon, 222 O'Fallon Plaza: 636-240-0633
- * Overland, 507 Wodson Rd: 314-429-6171
- * St. Charles, 920 S. Fifth St: 636-947-8547
- * 10159 Watson Rd: 314-822-5369




Good at all Dolly Madison & Wonder Hostess Bakery

Visit us at www.bakeryoutlets.com

Hilleman Funeral Home

Our Family serving your family for over 50 years

Pre-arrangement available. Call for consultation.

9709 Lackland Road Overland, MO (314) 428-4337

Are you a Single Parent?

And are between the ages of 18 to 100?

Parents Without Partners is the world's largest non-profit, volunteer Single Parent organization.

PWP St. Charles County Chapter #1363 would like to cordially invite you to our...

OPEN HOUSE/NEW MEMBERSHIP

Sunday, September 14

2:30 - 4:30 p.m.

Old Town Pavilion B

1st Park Street

St. Peters

OR

Tuesday, September 16

7 - 9 p.m.

St. Peters City Hall

Meeting Room C


One St. Peters Centre Blvd.

For more information about PWP, please check us out on the Web at www.parentswithoutpartners.org or call us at 636-294-1217.



ParentsWithoutPartners.org

An International, Non-Profit, Educational Organization Devoted to the Interests of Single Parents and Their Children



Now Enrolling

Christian Hospital Child Development Center

Professionally Staffed • State Licensed

AGES: 6 WEEKS-6 YEARS

- ✓ Open Year-round (excluding major holidays)
- ✓ 4 Outside Play Areas
- ✓ Infant-toddler Program
- ✓ Preschool Program
- ✓ Developmentally Appropriate Curriculum & Assessments for Kindergarten Readiness
- ✓ Full-time or Part-time
- ✓ Full-day Kindergarten Program with Extended Care
- ✓ Preschool Field Trips
- ✓ Special Events (Thanksgiving Luncheon, Christmas Party, Mother's Day and Father's Day events, and more!)
- ✓ Audiology Screenings (3-5 year olds)
- ✓ Safe Child Ids

For more information on the child center call Phyllis at 314-653-5600.



Christian hospital
BIC HealthCare

Local Athletes Win Gold at 2008 National Championships

Hazelwood, MO – St. Louis Elite members from Hazelwood, Missouri won 19 Top Ten places at the 2008 USA Gymnastics Trampoline & Tumbling National Championships competition held July 1 – 6, at the Kansas City Convention Center.

Over 1,600 athletes, representing 190 gymnastics clubs in 37 states met in Kansas City, Missouri, at Bartle Hall from July 1 through 6 for the 2008 USA Gymnastics Trampoline & Tumbling National Championships.



Kid's World Gymnasts Pictured left to right: Sulaiman Hinton, Andrew Shelton, Erin Dennis, Berklea Going, Clayton Janvrin, Coach Eric Miller

This competition names the national champions in trampoline – both individual and synchronized, power tumbling, and double mini trampoline.

“High scores were made by all of our athletes at the competition. It shows they can compete on a national level and place well,” said Eric Miller, head coach of St. Louis Elite Trampoline & Tumbling. “Our team showed heart and character. Nationals is the ultimate competition of the season.”

St. Louis Elite had ten athletes enter the National Championships. The team took 19 Top Ten places and seven medals: two gold and five bronze. Clayton Janvrin and Erin Dennis, both from Florissant, won gold medals at the competition, making them National Champions. Also from the North County area were Kevin Foster and Sulaiman Hinton, making their national

debut with very impressive results. The athletes cheered the Region IV participants to their fifth title at the Regional All-Star competition. St. Louis Elite is in the Region IV area.

St. Louis Elite’s athletes who placed in the Top Ten are (in alphabetical order):

- Natalie Altis (Ballwin): Level 6 Trampoline-6th
- Henry Baer (Town & Country): Level 9 Trampoline & Level 6 Tumbling-3rd, Level 8 Double

Mini-4th

- Erin Dennis (Florissant): Level 7 Tumbling-1st
- Kevin Foster (Blackjack): Level 7 Double Mini-7th, Level 7 Tumbling-9th
- Berklea Going (St. Louis): Level 8 Trampoline & Tumbling-9th
- Sulaiman Hinton (Florissant): Level 6 Trampoline & Level 7 Double Mini-5th
- Clayton Janvrin (Florissant): Level 7 Trampoline-1st, Level 8 Double Mini-3rd, Level 7 Tumbling-5th
- Ian Miller (Ballwin): Level 7 Tumbling-3rd, Level 9 Trampoline-8th
- Josh Ryan (St. Ann): Level 5 Double Mini-10th
- Andrew Shelton (St. Louis): Level 10 Trampoline-3rd, Level 10 Double Mini-4th

St. Catherine

RETIREMENT COMMUNITY

Our Community Provides

- Continental Breakfast & Dinner
- Housekeeping & Laundry
- Recreation Programs
- Transportation
- 1 & 2 Bedrooms with utilities

314-838-3877

“Our Rates Will Surprise You!”


Call today for a complimentary dinner and tour.



3350 St. Catherine St.
Florissant, MO 63033
www.rhf.org

A Retirement Housing Foundation Community

REBUILT APPLIANCES



30" Gas Range

4-Burner

Reconditioned


90-Day Warranty

\$239

KEEVEN APPLIANCE

3350 PARKER ROAD
FLORISSANT, MO. 314-837-2723

1976 OLD HWY. 94
ST. CHARLES, MO. 636-949-2555



Find a Doctor Close to Home

SAVE GAS AND TIME -- LET US HELP YOU FIND THE RIGHT PHYSICIAN CLOSE TO HOME.

We can make your next appointment! Call **314-747-WELL (9355)** or **1-877-747-WELL** and one of our physician referral specialist will find a doctor that meets your needs and takes your insurance. It is like having your own personal assistant.

Whether you are looking for a specialist or a primary care physician, give us a call.

Call 747-WELL or 1-877-747-WELL today!



CONGRATULATIONS!

St. Louis Elite is a not-for-profit organization dedicated to enhancing each athlete's life through competition and training, by developing strength, agility, courage, confidence, and discipline; thereby creating a safe, positive, winning environment. St. Louis Elite trains at Kids World Gymnastics, 8701 Dunn Road, Hazelwood, MO 63042. For more information about St. Louis Elite and our teams, visit our website at <http://www.kidsworldgymnastics.com>.

Trampoline was first recognized as a sport in its own right in the United States in 1967 and made its Debut as an Olympic sport at the 2000 Olympic Games in Sydney, Australia. Double-mini trampoline competition was added in 1978. Power tumbling, first performed on simple mats, has had US National Championships dating back to 1886. For more information, visit the official USA Gymnastics Trampoline and Tumbling web site at <http://www.usa-gymnastics.org>.

Luau

Themed Open House


1-3 p.m.

August 22, 2008

Entertainment, Refreshments, Tours and Giveaways

Please RSVP by calling 314-747-WELL (9355)


“Located in the shadow of Christian Hospital NE”



Village North Retirement Community
BIC HealthCare™

11160 Village North Drive
St. Louis, MO 63136

Call 314-355-8010
or visit us at www.villagenorthretirement.org



Old Town Florissant

in the Valley of the Flowers

Florissant Undertakes Project to Assist People Facing Foreclosure

The City of Florissant, according to Mayor Robert G. Lowery, has been on top of situations preventing Florissant properties from being foreclosed, since this became a problem in the United States. We ask anyone

that may be in this situation or coming close to this situation to please call the City at 314-839-7680 and we will assist you and hopefully prevent you from losing your home. It is our obligation to provide every citizen

in each area the help they need. We have helped almost 100 different people save their homes. Please see the information below: "Tips for Avoiding Foreclosure" and let us know if we can be of assistance.

Tips for Avoiding Foreclosure

Are you having trouble keeping up with your mortgage payments? Have you received a notice from your lender asking you to contact them? If you are unable to make your mortgage payment:

1. **Don't ignore the problem.** The further behind you become, the harder it will be to reinstate your loan and the more likely that you will lose your house.
2. **Contact your lender as soon as you realize that you have a problem.** Lenders do not want your house. They have options to help borrowers through difficult financial times.
3. Open and respond to all mail from your lender. The first notices you receive will offer good information about foreclosure prevention options that can help you weather financial problems. Later mail may include important notice of pending legal action. Your failure to open the mail will not be an excuse in foreclosure court.
4. **Know your mortgage rights.** Find your loan documents and read them so you know what your lender may do if you can't make your payments. Learn about the foreclosure laws and timeframes in your state (as every state is different) by contacting the State Government Housing Office.
5. **Understand foreclosure prevention options.** Valuable

information about foreclosure prevention (also called loss mitigation) options can be found on the internet at portal.hud.gov/portal/page?_pageid=33,717348&_dad=portal&_schema=PORTAL

6. **Contact a HUD-approved housing counselor.** The U.S. Department of Housing and Urban Development (HUD) funds free or very low cost housing counseling nationwide. Housing counselors can help you understand the law and your options, organize your finances and represent you in negotiations with your lender if you need this assistance. Find a HUD-approved housing counselor near you or call (800) 569-4287 or TTY (800) 877-8339.

7. **Prioritize your spending.** After healthcare, keeping your house should be your first priority. Review your finances and see where you can cut spending in order to make your mortgage payment. Look for optional expenses-cable TV, memberships, entertainment-that you can eliminate. Delay payments on credit cards and other "unsecured" debt until you have paid your mortgage.

8. **Use your assets.** Do you have assets-a second car, jewelry, a whole life insurance policy-that you can sell for cash to help reinstate your loan? Can anyone in your household get an extra job to bring in additional income? Even if these efforts don't significantly increase your available cash or your income, they demonstrate to your lender

er that you are willing to make sacrifices to keep your home.

9. **Avoid foreclosure prevention companies.** You don't need to pay fees for foreclosure prevention help-use that money to pay the mortgage instead. Many for-profit companies will contact you promising to negotiate with your lender. While these may be legitimate businesses, they will charge you a hefty fee (often two or three month's mortgage payment) for information and services your lender or a HUD approved housing counselor will provide free if you contact them.

10. **Don't lose your house to foreclosure recovery scams!** If any firm claims they can stop your foreclosure immediately if you sign a document appointing them to act on your behalf, you may well be signing over the title to your property and becoming a renter in your own home! Never sign a legal document without reading and understanding all the terms and getting professional advice from an attorney, a trusted real estate professional, or a HUD approved housing counselor.

Source: U.S. Department of Housing and Urban Development's Homes

and Communities website, www.hud.gov/foreclosure/index.cfm

Generations Antique Mall
2 Day Sale
August 22 & 23
 Celebrate our 1-year Anniversary
 Savings of 20% and more.
 1800's Primitives to 1960's Retro
 50 dealer spaces
 729 rue. St. Francois • 314-831-6070
 Hours: Monday - Saturday 10 a.m. - 5 p.m.

The VILLA at RIVERWOOD
BACK BY POPULAR DEMAND!
 Therapeutic Chiropractic Massage with
 Licensed Massage Therapist Clarence Byrd
 of The Florissant Injury and Pain Relief Center.
 \$20 for 1/2 hour session. Cash or check. Must call for appointment.
TUESDAY, AUGUST 26
 9 A.M. - 1 P.M.
Call 314-839-5000 to R.S.V.P.
 #1 Pratt Place, Florissant, MO
www.villaatriverwood.com

STATE FARM INSURANCE
 State Farm Insurance Companies®
 Home Office, Bloomington, Illinois
Ron Schmidt Insurance Agency
 Florissant, MO
314-921-5100
ron.schmidt.B5QX@statefarm.com

Dooley's Florist & Gifts
 We are committed to serving your floral needs with personal style
 314-837-7444
www.dooleysflorist.com



A reminder about auto insurance rates.
A "quart low" reminder.
 When was the last time you checked to see how our auto insurance rates compare? They may be more competitive than you think. Call today and find out. So you can check it off your list, and off your mind.

Steven R. Hug, Agent
 11754 Lusher Rd.
 (314) 355-0111 Bus

AMERICAN FAMILY INSURANCE
 All your protection under one roof™
 American Family Mutual Insurance Company and its Subsidiaries
 American Standard Insurance Company of Wisconsin
 Home Office - Madison, WI 53703
 American Family Insurance Company
 American Standard Insurance Company of Ohio
 Home Office - Columbus, OH 43240
www.aflac.com
 © 2008 002056 - 106

THE MOST IMPORTANT THING TO CONSIDER when moving your parents into a retirement community is this: Who is running the place?

This is why DeSmet Retirement Community has Mitch Bachtel as their Administrator. Mitch has 18 years experience in nursing home operations, and 25 years experience in the medical field, including his work as a paramedic and licensed practical nurse. As important as all of that is, Mitch is also a devoted, concerned, compassionate administrator who is in it for the love of the residents.

VOTED #1 in North County 2007

With Mitch Bachtel in charge of DeSmet Retirement Community, your parents couldn't be in better hands. Call us, or drop by for a tour today.

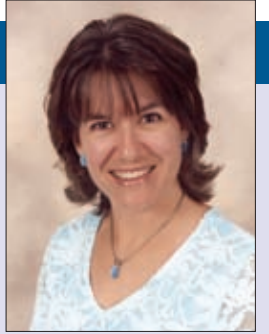
You will see why DeSmet is the Most Popular Residential Care facility in North County.

DeSmet Retirement Community
 Independent Living / Assisted Care
 1425 N. New Florissant Rd., Florissant
314.838.3811
 A Non-Profit Retirement Housing Foundation Community (RHF)

BLACK JACK FIRE
Chance takers are accident makers. Practice Fire Safety Everyday.
Michael J. Gantner, Fire Chief
 5675 N. Hwy. 67, Florissant, MO 63034
 314-741-9905 www.blackjackfire.org

The Popular Kids

By Shelly Schneider



Shelly Schneider

School's first day is fast approaching. Samantha begins her final year as a middle school student, and Michael moves from the top of the food chain to the bottom as he leaves middle school and moves up to the ninth grade. Christopher enters his second year of high school. He's our guinea pig, don't you know. As the eldest Schneider child, Christopher experiences everything first. I'm also the oldest of three children, so I'm well aware that the parents are just as much guinea pigs.

High school, mercifully, is socially a lot easier than middle school. I knew that middle school wouldn't be easy. I attended the workshops and the parent orientations, and I quickly found out that these are ever-changing, ever-growing and ever-confusing years. Middle school kids are finding out who they are, and sometimes they run over one another as they climb the social ladder. I knew what could happen...I just didn't know where Christopher, Michael and Samantha would fall on that ladder (and I hope the words "fall" and "ladder" weren't lost on you).

The whole family found out Christopher's place in the middle school universe one evening at dinner.

To look at us, you'd never be able to tell I was this child's mother. But Michael inherited the one thing I truly wanted to pass on to my children.

"I have a headache tonight," Chris said while picking over his pork chop.

This is usually a ploy, because my darling son doesn't like meat. Don't go off on me...he does like hot dogs, bologna and chicken pieces that have been chopped and formed into 'nuggets.' He simply doesn't like real meat.

"Well, if it's so bad that you can't eat, then you'll need to go straight to bed," I replied.

"No, Mom, really," he said, rubbing the top of his noggin. "I was hit in the head by a locker this afternoon."

In the sixth grade Christopher's locker was on the bottom (a little piece of irony that wasn't lost on me). Just above him and to the left was the locker of one of the 'popular' girls. She didn't see him one day and opened her locker as he was standing up. As Christopher

recounted the story, I looked at Michael. He loves pork chops, and often asks if there are enough for seconds. Michael was sitting in his chair, facing his brother. His fork was on his plate.

"Michael, don't you feel well today?" I asked.

"Huh? I was just listening to Christopher's story," he said.

"Well, buddy, did the young lady apologize?" I asked, turning my attention back to my oldest child.

"Are you kidding? That would mean she would have to talk to me, Mom," he said.

Now, to be fair, the young lady did offer a sympathetic glance, and Christopher was not psychologically harmed by the encounter.

"What do you mean?" Michael asked.

This was good stuff. He was learning something new about his older and wiser brother.

"She's one of the popular kids," Christopher said. "She wouldn't

talk to me."

Michael was dumbfounded.

"You're NOT popular?"

The bubble popped, loud and unceremoniously.

"Let me show you how things work in middle school, Michael," Christopher said.

I started to giggle to myself. This was a whole new side of my son. He was passing on a bit of cherished wisdom to the next in line. Christopher grabbed the ketchup bottle (Michael loves meat, but cannot eat it without dousing it in ketchup), and set it in front of him.

"Let's say this is the middle school food chain," Chris began to explain.

He put his hand on the cap.

"These are the popular kids," he demonstrated.

He then put his hand about an inch from the bottom of the bottle.

"This is me."

Again, Michael was simply dumbfounded.

"You're not popular?" was all he could ask.

It was more a traumatic experience for Michael than it was for Chris. Our oldest son was laughing at the whole situation. I was so happy that his place in the middle school fish bowl didn't seem to bother him.

Jim and I took the rest of the meal gently explaining to all of our children that popularity was something that did not come from within. We told them they needed to focus on the things that came from the inside...things like respect for others, kindness, and charity. Popularity, we said, might be the big thing for a few years, but it fades away.

When it was Michael's turn to enter the middle school fish bowl, he was ready. And he walked into the school with a good inkling of his place on the perceived food chain.

"I know I'm not going to be one of the popular kids," he told me.

"Why not, sweetie?" I asked.

"That's o.k., Mom, it doesn't bother me."

To look at us, you'd never be able to tell I was this child's mother. But Michael inherited the one thing I truly wanted to pass on to my children. He's comfortable in his own skin, and he honestly doesn't care what others think about him. It might be a rough few years, but I am confident all of my children will grow up to be popular...popular with their life-long friends, popular with their co-workers, popular with their spouses and children.

ATTENTION READERS!

Shelly Schneider has actually caught up with the 21st century! You can now listen/download her columns on 2GuysTalking... a podcasting network.

Simply visit www.2guystalking.com and look for "Life on the Half Shelly."

It's cool, it's fun, and it's free!

Wyndham Park III

Senior Community



APARTMENT AMENITIES

- All electric
- Full kitchen including:
 - Range and oven
 - Refrigerator
 - Microwave oven
 - Dishwasher, garbage disposal
- Ceiling fans
- Stackable washer & dryer

COMMUNITY AMENITIES

- Resident controlled access
- Computer lab & library
- Home theatre
- Fitness center
- Billiards room
- Barber/beauty shop in Phase I
- Wellness center in Phase II

800 Wyndham Park Drive
St. Peters, Missouri 63376

2 Bedroom - \$550

For more information call:
636-279-2228

OPENING IN NOVEMBER 2008!



Certain age and income restrictions apply. Residents responsible for electric, water and sewer expenses.



Lease With Option at Heritage Pointe

Heritage Parkway, Wentzville, MO



FIRST YEAR SPECIAL
Lease for only **\$995/month**

Brick and Stone fronts, spacious, shopping

New Construction
Build Equity Faster Than Owning

www.HunekeHomes.com
636-447-7797

Over the Fence

By Joe Morice



Joe Morice

Parental Paranoia vs. Children's Health

David Finkelhor, Director of the University of New Hampshire Crimes Against Children Research Center points out that between 1993 and 2004, crimes against kids in the U.S. plummeted, as much as 63 percent for teens 14 to 17. They also claimed sexual abuse of children overwhelmingly comes from somebody they already know, not a stranger. He was advocating that children should play outside more.

I agree with this, but my youngest daughter does not. I doubt my granddaughter has ever spent any significant time playing outdoors without supervision in her young life. I feel bad about that. I can also understand the paranoia of parents worried about child abductors and such. They're out there but apparently, not nearly as much as feared. The St. Louis County Family crime unit claims they are more concerned with the baseball coach than someone cruising around the neighborhood looking to abduct children. Again, I agree, in spite of my time as a girl's softball coach.



Kids sit indoors getting fat these days while playing video games or corresponding in computer chat rooms. Parents consider it unthinkable for them to meander around their neighborhood with other kids...if there are others that actually do. Personally, I consider this a form of child abuse. They aren't learning how to survive in the real world where other people are a physical presence instead of microdots on an electronic display.

I was lucky, I guess. We used to grouse about not seeing our classmates because we lived too far out in the country. But at the same time, we learned to amuse ourselves by taking advantage of the surrounding woods and fields, various turn-of-the-century outbuildings and a barn with a hayloft, a favorite of country kids the world over. Rectangular hay bales stored in haylofts were like giant sets of building blocks. By stacking the bales this way and that, we made tunnels or any other configuration our imagi-

nations cooked up. Our parents didn't worry about us being abducted. They worried about us falling out of trees or getting chased by a dairy bull. We often played by ourselves or rode bicycles on dusty gravel roads for miles, all out of sight and sound of parents.

Once in a while, I visited with relatives in the big city. My cousin and I roamed the paved streets far and wide on bicycles or on foot. The smooth paved streets held me spellbound. The parental requirement was to let them know we were going to do it and to stay off the main drag where all the traffic was; a danger often ignored these days by adult bicycle riders.

Kids are naturally a bit more gullible than grown-ups. They are more trusting but with proper training, they aren't likely to be gulled into climbing in cars with strangers. "Don't talk to strangers," is a parental statement that probably started after few generations of prehistoric Homo Erectus.

When my kids were young, they ranged the neighborhoods of Florissant. One afternoon, while walking home from school, they witnessed an attempted abduction by two men in a large car. The men stopped and tried to lure two grade school children into the open door. The children were well trained. They ran screaming up the street. My kids and their friends also screamed and ran. People in nearby houses came out on their porches, yelling and pointing. The two failed abductors peeled away in panic. Police converged on the neighborhood like the Indians did on Custer's Cavalry and I'm sure the swat team was standing by doing Rambo imitations. Unfortunately the ensuing dragnet to apprehend those two bozos failed, probably because nobody got a license number.

I remember my daughter telling this

tale in shocked wide-eyed wonder. I also remember the hair on my neck standing up. There are few things more fear-inducing to a parent than the thought of having a child abducted and the feeling of terrified helpless frustration it causes. I can't even begin to imagine how the parents of abducted children can go on afterwards.

Despite our fears, we continued letting our children play outside and visit neighbors within reasonable range. They still walked the two blocks to and from school. They knew what to do should the bad guys show up and people in residences along with way watched as well. It's one thing to understand there are low-life critters resembling humans out there who would abduct children, it's another to stop living life on account of it.

Is the risk worth it? I'm not sure, but I had fun as a kid being allowed to be a kid instead of a Twinkie-gobbling computer chat room personality. For me, getting fat in front of a computer came with AARP membership applications. Life is weird.

It does not do to dwell on dreams and forget to live.
J. K. Rowling, Harry Potter and the Sorcerer's Stone, 1997

Comfort Systems
 Heating & Cooling Equipment
WAREHOUSE PRICES
 Furnaces
 Air Conditioning Supplies
 www.comfortsystems.info

Gas or Electric Heating Systems

50,000 BTU	\$400
75,000 BTU ...	\$450
100,000 BTU ..	\$475
120,000 BTU ..	\$500
140,000 BTU ..	\$600

FACTORY WARRANTY

Air Conditioning Special

2 ton	\$500
2-1/2 ton	\$600
3 ton	\$655
3-1/2 ton	\$750
4 ton	\$850
5 ton	\$925

HEAT PUMPS/DUCTWORK AIR CLEANERS & HUMIDIFIERS
 VISIT OUR SHOWROOM
 WEEKDAYS 8 A.M.-4:30 P.M.
 3940 Taussig Road
 Bridgeton, MO 63044
739-1600

"A Part Of Your Family In Your Time Of Need"

BAUMANN
 COLONIAL CHAPEL

Family Owned and Operated Since 1880

2504 Woodson Road
 Overland, MO 63114
 314-427-2345
 1-800-427-5145
 www.baumannchapel.com

Mitch Wilson
 President

Economic Stimulus Payment
 If you did not file a 2007 Federal Income Tax Return or did not receive the amount of a stimulus check you anticipated, contact Sederburg & Associates. Qualified retirement and veteran benefits will make you eligible for the Stimulus Payment. Your return must be filed by October 15, 2008.

Sederburg & Associates
COMPLETE TAX SERVICES
 3023 HWY 94 S., ST. PETERS, MO 63376
 2713 HWY K, O'FALLON, MO 63366
636-928-1040

No Additional Charge for Trucks, SUVs or Vans

Autobahn Full-Serv Express CARWASH

Full-Service \$12.99 and Up
Express \$7.00 and Up

Full Service Wash with Hand Dry Packages!

FULL-SERV BASIC	Reg. \$12.99	W/Coupon \$9.99
<small>Foamy Presoak, Soft Cloth Wash, Rocker Panel Wash, High Pressure Rinse, Spot Free Rinse, Drying Agent, Vacuum Interior, Window Cleaning, Clean Console and Hand Towel Dry</small>		
FULL-SERV PLUS	Reg. \$17.99	W/Coupon \$14.99
<small>Basic Wash Plus: Foamy Tire Cleaner, Under Car Wash, Hand Cleaning of Wheels, Tires & Whitewalls and Tire Shine Application</small>		
FULL-SERV SUPREME	Reg. \$24.99	W/Coupon \$19.99
<small>Plus Wash And: Triple Foam Polish, LustraShield Total Surface, Gloss, Floor Mats Cleaned, Your Choice of Scents</small>		
SUPREME INTERIOR	Reg. \$39.99	W/Coupon \$35.99
<small>Supreme Wash Plus: Full Hand Treatment of All Interior Surfaces</small>		

\$5 OFF Full-Serv Supreme
 w/Hand Dry Car Wash Package
 With this coupon. Not valid with any other offers.
 Expires 8/31/08

\$3 OFF Any Full-Serv Wash
 w/Hand Dry Car Wash Package
 With this coupon. Not valid with any other offers.
 Expires 8/31/08

636-925-9855
3160 Elm Point Industrial Drive
 (Hwy 370, Exit Elm, Right at Elm Point, next to Chuck A Burger)

Students at McCurdy Elementary Build Their Own Levees, Learn about Floods

Potting soil, water and sandwich bags full of sand combined to teach students at Mc-

Curdy Elementary School in the Hazelwood School District about floods and levees.

The kindergarten and first grade students in summer school teacher Patience Edwards' class worked on a beach theme when students started asking questions about things they heard on the news recently, such as levees and floods. They wanted to know how floods happened and what they looked like.

First, Edwards reviewed some associated vocabulary words with her students.

"Who can tell me what a levee is?" she asked. Hands went up.

"It's when you use sandbags to..." one student started to answer.

"You're close but that's not it," Edwards said.

They continued, reviewing

the definitions of levee, breach, flood watch, flood warning, flash flood watch and flash flood warning.

Next, Edwards showed her students how to make a levee. She scooped a large plastic basin to the center of the room and she emptied a bag of potting soil into it. With the students gathered around her, she compressed and kneaded the soil, dividing the tub in half with her levee. Using

some Monopoly game board pieces, she created a town on one side of the levee and then she poured pitchers of water on the other side.

"I didn't use any sandbags," she pointed out to the students. She asked them to stand on one side of the room if they thought her levee would hold or to move to the other side if they thought the levee would breach. More students thought it would hold back the water and they were right.

Using three clear plastic tubs at each table, the students then

had the chance to make their own levees.

"You and your team have to

in its water, which found its way through some holes in the barrier.

"Our town is floating! Save the dog!" Red team members cried.

The Green team's levee also kept the water back.

As they cleaned up and came back together as one group, Edwards asked the students what happened with their levees.

"It didn't breach and we worked together as a team," said Blue team members.

"We had holes in our levee so it breached," Red team reported.

"You made your levee very thin from top to bottom," Edwards told the

team.

"We kept smooshing the sandbags into the levee and it held," the Green team said.

To reinforce what they learned, they had to write stories about what happened and why it happened with their levees. She also reminded the class that because Red team's levee did not hold, that didn't make them wrong.

"We should thank the Red team for showing us what a breached levee looks like," Edwards said.



Clockwise, from left, Lauren Ruiz, Giselle Diaz, Mya Diaz and Kyle Patzke get into their levee-building project as members of the Red team. These McCurdy Elementary summer school students learned about flood vocabulary words and they watched teacher Patience Edwards build her own levee before trying their own.

muddpuppies

Natural • Organic • Raw Diets

Puppy Pawdicures

Includes Nail Trim & File \$8.00
Sundays Only
All Dogs Welcome!

Wellness Center for Dogs and Cats

636-329-9940
1120 Technology Drive, Suite 114
(Hwy K & 40) O'Fallon, MO
Hours: Mon-Tues 10-5:30
Wed-Fri 10-7 Sat-Sun 10-4
www.muddpuppieswellnesscenter.com

Love art? Don't let the opportunity to see work from local artists pass you by.

An exhibit of artwork created by students in Continuing Education classes at SCC will take place Friday and Saturday, Aug. 22-23, in the College Center Rotunda on campus. Admission is free.

For exhibit hours, visit www.stcbas.edu/calendars.

Debbie Lienhart, SCC Continuing Education art student

SCC ST. CHARLES COMMUNITY COLLEGE

For more information about the show, contact Lori Porter at 636-922-8410.

WIN TICKETS TO

DISNEYLAND ADVENTURE

SEPTEMBER 4-7

AT THE ST. CHARLES FAMILY ARENA

For more information go to www.familyarena.com or www.disney.go.com/disneyonice

How to win tickets: Mail your name, address and the number of tickets you would like to win to...

Community News
2139 Bryan Valley Commercial Drive
O'Fallon, MO 63366

Disney ON ICE

Hazelwood Superintendent Earns Honor from NCCU

North County Churches Uniting for Racial Harmony and Justice (NCCU), has honored Dr. Chris L. Wright, superintendent of the Hazelwood School District, with an Outstanding Education Award.

The recognition by NCCU stems from Wright's dedication to education and her efforts at closing achievement gaps among diverse groups of students.

"NCCU is impressed with Dr. Wright's commitment to racial harmony and the educational achievement of all students," said Dr. Rance Thomas, president of NCCU.

"She is committed to closing achievement gaps, despite the difficulties involved. She has made significant progress and is still taking steps to make sure achievements will be reached in the future."

Wright has led the Hazelwood School District since July 2002.



Dr. Rance Thomas, president of NCCU, and Dr. Chris L. Wright, superintendent of the Hazelwood School District. Wright was honored by NCCU with an Outstanding Education Award.

She has been a teacher and administrator in Missouri public schools for 30 years. For the past 24 years, she has served the needs of the diverse student populations in districts in North St. Louis County. She is actively involved in community, professional and civic organizations, serving on committees and boards. Wright earned an A.B. from Indiana University, an M.A. from the University of Missouri-St. Louis and a doctoral degree from Saint Louis University.

Now Open

LOVELY LULLABIES
BOUQUETTE
Life's Luxuries for Your Little One

222 North Main Street
in Historic St. Charles

Hours
Tuesday - Thursday 10-7
Friday & Saturday 10-5
Sunday 12-5

Lovely Lullabies can help create your dream nursery with a full selection of beautiful and well-crafted furniture, bedding, décor, accessories and toys. Everything is specially chosen for safety, style and functionality.

- Gifts for expecting Moms and Dads
- "Rescue Me!" personal shopping service
- Custom designed gift baskets
- Gift wrapping service

Grannemann Elementary Learns about Girl Scouts

Girls from kindergarten to fifth grade at Grannemann Elementary in the Hazelwood School District spent a morning learning and experiencing the life of a Girl Scout at a Taste of Girl Scouting.

Through arts and crafts, songs and games, 94 girls at Grannemann gathered in the school's cafeteria for an introduction to the Girl Scouts by adult scouts from Girl Scouts of Eastern Missouri. The students

worked at various stations to decorate flower pots and plant marigold seeds, make trail signs and snacks, and play with a gooey, white substance called gak, mixed right before their eyes in a big bowl of white glue and liquid starch.

To start the meeting, the girls recited the Girl Scouts Promise and the Girl Scout Law, holding up three fingers in the tradition

may not otherwise be exposed to being a Girl Scout."

Maya Pierce has been with the Girl Scouts of Eastern Missouri for 10 years. She served as the main leader for Grannemann's program and spoke passionately about the reason for the day's event.

"All girls should be able to experience Girl Scouts, and it's always a good idea to bring it into the schools."

Michelle Prather, summer school site supervisor at Grannemann, said the students were excited about the program. Girls and teachers were asked to wear pink to school to celebrate the activity and nearly everyone wore an outfit with some shade of pink. As the morn-



Isys Snider, left, and Skyla Billingsley, participate in a Taste of Girl Scouting at Grannemann Elementary in the Hazelwood School District. The girls are in the Sunny Start program and will attend kindergarten in the fall.

ing progressed, it was obvious from the chatter and smiles that the girls were enjoying the activities.

Liesl Neil has worked for the Girl Scouts of Eastern Missouri for two years. She explained that one of the goals of the Taste of Girl Scouting program was to give girls a chance to experience different aspects of Girl Scouts.

"The programs are like small Girl Scout meetings," she said. "They are an introduction to the organization for girls who



This is the first time that the Hazelwood School District has been involved with a Taste of Girl Scouting. Elementary schools throughout the District will host the program during summer school.

Magic Wands, Trick Ropes Highlight Magician's Show at Jana Elementary

Brian Styles "disappeared" from Jana Elementary School in the Hazelwood School District many years ago - he went on to middle school, high school and then college. Invited by his former second grade teacher, Jane McCarthy, Styles, 19, recently returned to Jana as a practicing magician.

"The most important thing about practicing magic is to know your audience," Styles said. "You have to come up with something that relates to the crowd."

He put on a show for the second through fifth graders and followed that with a separate show for kindergarten and Sunny Start students.

Of the many props Styles used in his first show, the unicycle propped against the wall received the most attention. He said he rode it to school daily for four years, starting in second grade. The kids clamored for him to ride it for them but he demurred, saying he would pop the tire on it these days.

Toward the end of his first show, Styles asked for two volunteers to assist him with a trick. He called third graders Bryce Pettifort and Jada White to come up to the front.



Magician Brian Styles, center, prepares to pull the cover from a squirming bundle with the help of Jana Elementary School third grade students Jada White, left, and Bryce Pettifort. The summer school audience believed a live rabbit hid under the sheet. White and Pettifort helped Styles perform several tricks. Styles once attended Jana Elementary as a student.

Styles handed the students a pair of magic wands, reluctantly, because he told the volunteers and the audience they were some of his earliest wands and he wanted to make sure the students took care of them. As soon as Styles turned his back, the wand he gave Pettifort wilted like a flower, causing the audience to roar with laughter.

"I liked the twists and turns in the magic tricks," Pettifort said. "And I liked the broken stick trick."

"It was fun because he turned a bowling ball into a balloon," White said, recalling the illusion where Styles dumped a bowling ball from a seemingly empty paper grocery sack then appeared to throw it into the crowd, who flinched and backed away on the floor from a black balloon instead.

"I also liked it when he thought he spilled ketchup on my shirt," White said, describing another sight gag Styles used.

"I liked the white knot on the red rope trick," Pettifort added.

Styles had two ropes, one white and one red. After doing several tricks with the two ropes, he made a white knot appear on the red cord and then he untied it so a section of white appeared amid the red.

"When I was 5, I was able to do a magic trick," Pettifort said. "I had two animal crackers and a box. I could make one disappear and the other one reappear."

Coming back to Jana brought back memories for Styles, he said.

"It's kind of interesting. I remember a lot of the staff but with the new construction, things are different too," Styles said as he prepared for the first of two magic shows. Jana is one of many Hazelwood schools undergoing structural improvements and additions as a result of a bond issue passed by voters in 2006.

"It's neat to be able to come back here and say, 'Magic is my job,'" he said.

THE CORRAL
PERFORMING ARTS CENTER

WHERE PERFORMERS ARE BORN

Summer Camps

MUSIC, DANCE, ACTING AND MORE!

"Dance Competition Team"
Register with The Corral to join our competition team by June 30th and receive one group choreographed dance for free!

5055 Highway N Cottleville, MO 63304 636.928.6300
www.inthecorral.com

Where Comfort and Smile are Always in Style!

ELM DENTAL CARE

Armen Tumanyan, D.M.D.
Nathan Hartman, D.D.S.

<p>\$1 WHITENING (\$300 Value)</p> <p>Valid only with new patient exam, x-ray and cleaning at full fee (in absence of periodontal disease and caries.) Valid with coupon only. Not valid with any other offers. Mention Code CNR1. Exp. 8-31-08</p>	<p>\$89 SPECIAL Comprehensive exam • Cleaning • X-Rays (\$250 Value)</p> <p>Valid for new patients only. Cleaning will be done in absence of periodontal disease. Valid with coupon only. Not valid with any other offers. Mention Code CN89. Exp. 8-31-08</p>
--	---

- Cosmetic & Family Care
- Sedation Dentistry
- Braces
- Implants
- Most Insurance Accepted
- Early & Evening Appts Available

• 12-Month FREE Financing for Qualified Patients!

3739 Elm Street, St. Charles (near Hwy 370 & Elm St.)
636-916-4848 www.elmdentalcare.com

General dentistry practice. Provider is not a specialist in periodontics. Cosmetic dentistry and implantology are not recognized specialties of the American Dental Association and require no specific training to advertise these services.

DANCE CONNECTION
Performing Arts Center

Winner of the 2007 "Studio of the Year" At Orlando, FL Nationals

Register NOW for Classes for All Ages!

Ballet • Pointe • Jazz • Tap • Hip-Hop • Acro
Christian Praise Team • Voice
Adult Classes - Hip Hop and Tap

Don't miss our Open House August 23 1-4 pm

Fall Classes Start September 2

New Student Discount
Save \$50 OFF Your Tuition
Expires 10/31/08 New Student Only

71 Boone Hills, St. Peters, MO 63376 • 636.447.3365

Explore Saint Charles

Liza Minnelli Kicks Off Opening Season at Lindenwood with Tribute to St. Louis Native

St. Charles, MO - The stars will be shining bright at the Lindenwood Center for the Fine & Performing Arts as Liza Minnelli kicks off the 2008-09 Opening Season with two solo performances at 8 p.m, September 11 and 12. The \$32 million performing arts center, located at 2300 West Clay Street, is owned and operated by the non-profit, private Lindenwood University. Tickets for Liza Minnelli in Concert at Lindenwood are available through www.Telecharge.com or by calling 800-447-7400.

Liza's "Grand Opening" performance at Lindenwood will feature some of her biggest hits, including "All That Jazz," "Cabaret," "New York, New York," and will also pay a special tribute to her god-mother and St. Louis native Kay Thompson.

Liza Minnelli, daughter of the film and music legend Judy Garland and internationally-acclaimed director Vincent Minnelli, has garnered a stack of awards. In June 2008, she was inducted into the Hollywood Bowl Hall of Fame. She has recently returned from Europe where she performed to a sold-out Great Britain crowd and will be touring Italy in October and November with her Kay Thompson tribute show.

Lindenwood's 2008-09 season schedule also includes the first performance ever in St. Charles of Hal Holbrook in "Mark Twain Tonight" (September 20); Guy & Ralna of "The Lawrence Welk Show" (October 18); "Movin' Out" Broadway Tour (November 1-2); "Drowsy Chaperone" Broadway Tour (January 2-3, 2009); "Jesus Christ Superstar" starring Ted Neely, Broadway Tour (January 25); and "Cirque Eloize Nebbia" (March 7-8). For a complete Lindenwood Legacy, Broadway and Classical Series schedule and ticket pricing, please visit www.lindenwoodcenter.com or call the Lindenwood Box Office at 636-949-4433 Monday-Friday, 10 a.m.-7 p.m.

Lindenwood - "The stars are much brighter here - come see for yourself!"

ST. CHARLES SPORTS & PHYSICAL THERAPY

Dennis Roth, P.T. **Dave Bortfeld, P.T.**
owners

1840 Zumbahl Rd. 1155 Wentzville Parkway, Ste. 123
St. Charles, MO 63303 Wentzville, MO 63385
636-947-7678 **636-332-1313**

263 Centre Pointe Dr. 939 Highway K
St. Peters, MO 63376 O'Fallon, MO 63366
636-441-7500 **636-240-7000**

"If you are sidelined with an injury and need to get back into the game... Go where I go to get the best results... St. Charles Sports & Physical Therapy."

Steve Savard
"News 4 St. Louis"
Sports Director

Visit us online for
FREE Physical Therapy information & articles at www.scsportspt.com

SCC Young People's Theatre to Hold Open Auditions for 2 Plays

The Young People's Theatre at St. Charles Community College will hold auditions at 8:30 a.m. Saturday, Sept. 6, in the theater of the Donald D. Shook Fine Arts Building on the SCC campus. Auditions will be for the fall production of "Wonderland!" and winter production of "Babes in Toyland."

A silly adaptation of the book "Through the Looking Glass" by Lewis Carroll, "Wonderland!" is an upbeat coming-of-age story. The show will be performed at 7 p.m. Oct. 24-25 and 2 p.m. Oct. 25-26. "Babes in Toyland" is a fresh holiday tale that transports audiences to the familiar Mother Goose Land and the magical, mysterious Toyland. The show will be performed at 7 p.m. Dec. 19-20 and 2 p.m. Dec. 20-21.

Roles are available for actors ages 8-17. Youths must be accompanied by a parent at the audition.

The Young People's Theatre is a performing arts program by kids and their families for kids and their families produced by the SCC Corporate and Community Development Division.

For more information about the Young People's Theatre at SCC, visit www.stchas.edu/events/ypt.pdf. For more information about auditions and fees associated with YPT, call the SCC Department of Continuing Education at 636-922-8316.

ST. CHARLES FENCE & DECK CO.

6-YEAR WORKMANSHIP WARRANTY
LIFETIME WARRANTY ON ALL MATERIALS

Fences **Decks**

starting at starting at
\$14⁹⁵ /ft. **\$27⁹⁵** /sq. ft.

Free Estimates
High Quality without High Cost!

Design Center
8485 Veterans Memorial Pkwy.
O'Fallon, MO 63366
1/4 Mile East of Hwy K
STCHFENCEDECK.COM

636-240-4935

Voted #1 Fence & Deck Co. 2005, 2006, 2007

"SURROUNDING MISSOURI ONE FENCE AT A TIME!"
ST. CHARLES FENCE-DECK CO.
VINYL • CEDAR • COMPOSITE • ORNAMENTAL
RESIDENTIAL • COMMERCIAL

MasterCard HBA VISA Proud!

• Vinyl-Maintenance Free
• Cedar • Ornamental

COMMUNITY NEWS

Are you going to be out of town?

Go online to read any of our publications at mycnews.com

NOW OPEN

www.switchfitness.com

7110 Mexico Rd., St. Peters
At the corner of Mexico Rd. and Mid Rivers Mall Dr.
(Behind Commerce Bank)

636.970.2444
No Contracts
FOR WOMEN

No Enrollment Fee

We Offer First in the World Technology Found Only at Switch Fitness:

- Smart Card Knows you and your settings -keeps track and stores your data.
- Less than 30 minutes gives you results, lose inches and lose fat!
- Use real weight that automatically and electronically adjusts as you exercise.
- Each machine is your perfect personal trainer -with help from our consultants

Revolutionary Switch Fitness Technology!

Franchises Available: Contact Daniel Vassalli 314-795-8412.

FREE TRIAL SESSION
Not valid with any other offers. Exp. 8/31/08 AMOF

THE POWER OF 3!

USDA Dietary Guidelines:
We should all eat at least **THREE SERVINGS** of **WHOLE GRAINS EVERY DAY.**

IT'S AS EASY AS 3 SLICES OF OUR 100% WHOLE - GRAIN BREAD!

Stop by & taste the difference our freshly milled, 100% whole grain flour makes.

Hours:
Tue - Fri:
7 am - 7 pm
Sat:
7 am - 5 pm

Great Harvest Bread Co.

3843 Mexico Rd.
St. Charles, 939-4799



Explore Saint Charles

Friends & Family Fun Rally Helps in Fight Against Diabetes



St. Charles, MO – The American Diabetes Association (ADA) is inviting the public to join in the fight against type 1 & type 2 diabetes, by kicking off the Step Out: Walk to Fight Diabetes season in style. The ADA is hosting a free ice cream party from 3 to 5 p.m. on Sunday, August 24, at St. Charles Community College. The event will be held near the College Center Building and participants can park in the yellow lot on campus.

The ice cream party is free and open to everyone. Activities at the event include children's games, prizes, ice cream treats, educational materials about type 1 and type 2 diabetes and registration for both of the Step Out: Walk to Fight Diabetes events being held in St. Charles County.

Participants have the choice of Stepping Out in two different locations in St. Charles: Saturday, Sept. 27 at Frontier Park

or Saturday, Oct. 11 at St. Charles Community College. Those who choose to Step Out, play a key role in the American Diabetes Association's mission to find a cure for diabetes. Whether people choose to Step Out with co-workers, friends, or family, every step contributes to the fight. More information about the event and on-line registration can be found at www.diabetes.org/stepout and by choosing Missouri, then St. Charles – Sept. 27 or Cottleville – Oct. 11.

The mission of the American Diabetes Association is to prevent and cure diabetes and to improve the lives of all people affected by diabetes. To fulfill this mission the American Diabetes Association funds research to find a cure, programs like Family Resources Network and camp for children with diabetes. The ADA is the nation's leading nonprofit health or-

ganization providing diabetes research, information and advocacy.

Today, diabetes affects 23.6 million people in the United States, an increase of more than 3 million over the last two years. In addition to the 23.6 million who have diabetes, 57 million people are estimated to have pre-diabetes. Diabetes is the fifth-deadliest disease in the United States, and since 1987 the death rate due to diabetes has increased by 45 percent.

The ADA is devoted to helping those affected by diabetes. Join the cause by coming to the ice cream party and registering for one of the Step Out: Walk to Fight Diabetes events. For more information about Step Out or the American Diabetes Association, please call Amy Stephan at 888-342-2383, ext 6835 or e-mail at astephan@diabetes.org.

Have a Bale of Fun aboard Hayrides at St. Charles County's Broemmelsiek Park

St. Charles County Parks Department – To take advantage of the natural landscape of St. Charles County's Broemmelsiek Park and to highlight the farming heritage of the region, the Parks Department offers its popular hayrides at this location each Friday, Saturday, and Sunday evening from Sept. 5 to Nov. 23. Open to groups of up to 20 riders, the 45-minute hayrides cost \$125 per wagon.

Beginning at 6, 7, and 8 p.m. on Fridays and 5, 6, 7, and 8 p.m. on Saturdays/Sundays, the group hayrides will travel along the park's wood-lined fields and conclude with a one-hour campfire – where groups are encouraged to bring along hot dogs, marshmallows, and other items for roasting. Groups are permitted to bring non-alcoholic beverages and snacks, but alcohol and glass containers are prohibited on the wagons and at the campfire. Two wagons depart each hour, and large groups may reserve more than one time slot on a space-available basis. And, those wishing to stay longer than one hour after the hayride may reserve a shelter at the park for a minimal charge.



"Hayrides at Quail Ridge Park were among the very first programs offered by our department, and we're proud to be able to offer a more traditional experience for guests at Broemmelsiek Park," Parks Director Bettie Yahn-Kramer said.

"Through its natural trail system and thick oak/hickory forest, Broemmelsiek Park stands out as the perfect location for this fun, harvest-time activity."

The 494-acre Broemmelsiek Park is designed to focus upon the natural highlights of the land. Amenities available include picnic shelters, an Astronomy Viewing Area, several miles of multi-use trail (open to hikers, bicyclists, and horseback riders), and Off-Leash Dog Area, natural preserves, and a catch-and-release fishing lake. To get to the park from Highway 40/61, go southwest on Highway DD (Winghaven Blvd.) for approximately four miles to Schwede Road. Turn right on Schwede Road to the park entrance (1615 Schwede Road). Hayrides will operate at the north-side entrance to the park.

Advanced reservations, at least one-week in advance, are required for the hayrides. To reserve your space, please call 636-949-7535. Additional information is available at www.stccparks.org.

Knit and Caboodle
 Thousands of Yarns
 (alpaca, llama, silk, bamboo, corn and organically grown and dyed cotton and wool)
 Accessories Patterns
 Classes Knit-ins
CALL ABOUT OUR KNITTING CLASSES!
 330 S. Main Street | St. Charles, MO
 636-916-0060

VISIT US AT OUR NEW LOCATION

Celebrating OVER 141 YEARS in St. Charles County!

3.33% APY
8 Month CD
 - \$5,000 MINIMUM DEPOSIT -

(636) 940-5580 + 300 Woodlawn Ave 63366

* \$5,000.00 minimum deposit and balance required to earn stated Annual Percentage Yield (APY), which is effective as of July 18, 2008, and is subject to change at any time. A penalty may be imposed for early withdrawal. MEMBER FDIC.

NOT JUST ANOTHER WALK IN THE PARK

7th ANNUAL WILD IN THE WOODS TRAIL RUN SERIES

ST. CHARLES COUNTY PARKS

SIGN-UP INFORMATION

Held at four County parks from September through early November, the off-road runs may be competed as single races or as part of the four-race series.

Pre-registered runners will receive: a water bottle at Race 1, a short-sleeve t-shirt at Race 2, a hat at Race 3, and a long-sleeve shirt at Race 4.

For registration information, please call (636) 949-7535 or visit www.stccparks.org. Registration forms may also be obtained at area Fleet Feet locations.

2008 WILD IN THE WOODS TRAIL RUN SERIES

EVENT INFORMATION

Race #1 - Matson Hill Park
 Sept. 6 at 9 a.m.
 10 kilometers

Race #2 - Klondike Park
 Sept. 27 at 9 a.m.
 7 miles

Race #3 - Indian Camp Creek Park
 Oct. 18 at 9 a.m.
 10 miles

Race #4 - Quail Ridge Park
 Nov. 1 at 9 a.m.
 5 miles

Single Race - \$25
4-Race Series - \$75

Health Insurance Made Easy.

Your local Agency serving the St. Charles Community for over 25 years!

Lang Insurance Service
 Health Insurance Made Easy!
(636) 441-0211
www.langinsurance.com

Anthem

Steven J. Lang, President

Steve Lang with Lang Insurance Service is an independent authorized agent in Missouri for Anthem Blue Cross and Blue Shield. In Missouri (excluding 30 counties in the Kansas City area): Anthem Blue Cross and Blue Shield is the trade name for RightCHOICE® Managed Care, Inc. (RIT), Healthy Alliance® Life Insurance Company (HALIC) and HMO Missouri, Inc. (HMO) and certain affiliates administer non-HMO benefits underwritten by HALIC and HMO benefits underwritten by HMO Missouri, Inc. RIT and certain affiliates only provide administrative services for self-funded plans and do not underwrite benefits. Life and Disability products underwritten by Anthem Life Insurance Company, independent licensees of the Blue Cross and Blue Shield Association. ANTHEM is a registered trademark of Anthem Insurance Companies, Inc. The Blue Cross and Blue Shield names and symbols are registered marks of the Blue Cross and Blue Shield Association.

BUSINESS SPOTLIGHT

Dardenne Dental and Elm Dental Care



Nathan Hartman, D.D.S has joined the practices of Dardenne Dental and Elm Dental. Dr. Hartman is a graduate of UMKC School of Dentistry.

If you've been hiding your smile, putting up with pain, or putting off going to the dentist because you're too busy, your life is about to change! New and safe sedation dental techniques by Dr. Armen Tumanyan and Dr. Nathan Hartman mean you can have years of dental treatments done quickly, with little or no discomfort.

Contact *Dardenne Dental* and *Elm Dental Care* to discover how our dentist can help you get your dream smile.

"WHERE COMFORT AND SMILE ARE ALWAYS IN STYLE"

Dardenne Dental 1654 Bryan Rd. O'Fallon 636-978-4848 www.dardennedental.com
Elm Dental Care 3739 Elm St. St. Charles 636-916-4848 www.elmdentalcare.com

YMCA



The St. Charles County Family YMCAs present Matt Thompson as the District Sports Director. Matt has been with the YMCA for three years, two of which have been with the YMCA of Greater St. Louis. Growing up, he played sports at the downtown branch YMCA in Decatur, Illinois.

Matt feels blessed to have a career with the YMCA. "Our YMCA Sports Philosophy is 'Everyone Plays, Everyone Wins' which is why I love YMCA Youth Sports. The focus of our programs is to learn the fundamentals of the game, build good people through the teaching of our four character values and to have fun. Sports is a great venue to learn about life and I would encourage all parents to get their kids involved in a great program like the YMCA."

YMCA
 O'Fallon St. Charles Wentzville
 636-379-0092 636-928-1928 636-332-5574
 www.ymcastlouis.org

Wyndham Park III Senior Community



Wyndham Park is anticipating the opening of the senior community's third residential building in November 2008. All apartments are two bedrooms, one bath, and include full kitchens, ceiling fans and a stackable washer/dryer. Community amenities will be a fitness center, billiards room, a home theatre and access to the barber and beauty shop and wellness center at Phases I and II.

Lois English moved to Wyndham Park I from Overland in March 2006 and lives in a villa. She absolutely loves it! She is active within the community and loves to play bingo and is learning pinocle! She lives close to her family and enjoys spoiling her 4-month-old granddaughter. She loves to sew and makes things for her friends. Moving to Wyndham Park I has been a blessing to her!

Rent for the new apartment homes will be \$550/month. For more information or to schedule a private tour at Wyndham Park III, please call 636.279.2228.

Wyndham Park III Senior Community
 800 Wyndham Park Drive
 St. Peters, MO 63376
 636-279-2228

Abbey Heating and Cooling



Do you have Air Conditioning or Heating Issues?

At Abbey Heating and Cooling, your Rheem Team Recognized Top Contractor, your home and business comfort is our top priority. We value the opportunity to provide you:

- Prompt Service on All Brands
- Professional Work
- Easy to Understand Proposals
- Fair, Honest Pricing of our Products and Services
- Replacement, Repair and Service Options

We service all brands of air conditioning and heating equipment. Check out our website to learn more about our business and take a tour of our Rheem product line.

Call Abbey Heating & Cooling to schedule a service appointment or call for a free, no-obligation consultation to determine the perfect system for your home or business.

Abbey Heating and Cooling
 636-265-5915
 www.abbeyhc.rheemteam.net

Great Harvest Bread Company



If you arrive early at Great Harvest Bread Company you're in for a treat as you watch the loving care that goes into each loaf of bread. "We mill our own whole wheat flour and all our breads are made here from scratch," says owner Donna Thibodeau. "No mixes or preservatives are used and we hand knead each loaf. We have a big selection of whole grain products but we also have products that are not whole grain so we use white flour as well."

"Our signature bread is Honey Whole Wheat but selections are wide and varied from Cinnamon Chip, Raisin, or Pumpkin Breads to cookies, muffins, scones, and sweet things for weekends," said Thibodeau. "There are a lot of choices. Come in and check us out ... it's just really warm."

Great Harvest Bread Company
 3843 Mexico Rd.
 St. Charles, MO 63303
 636-939-4799

Northside Gymnastic Academy



Northside Gymnastic Academy, located on Tom Ginnever in O'Fallon, is in its second year of business. Janet Besselman is the owner and has been coaching in St. Charles County since 1982. She was a gymnast herself, competing at the optional level. She has used her experience from competing and coaching to provide top quality instruction.

Northside Gymnastic Academy services boys and girls from 18 months thru 18 years. NGA also has a competitive girls team that competes within the USA Gymnastics organization. In their first year of competition they captured several 1st place titles, sent a full team to the USAG State Championships and came home with 26 individual medals, 2 state champions and placed in the level 5 team category. They look forward to serving the community for those who chose competition or just recreation.

Northside Gymnastic Academy
 1317 Tom Ginnever ~ O'Fallon
 636-379-3599

1/2 Trak's



The minute you enter 1/2 Trak's Sports Bar & Grill you know this will become one of your favorite hang-outs.

Owner George Haltarczyk's love of cooking led him and his sons to the desire to open an authentic neighborhood restaurant. George, a retired University City Police Officer, was known as Half Trak by his fellow officers and thus, the name was a great choice for the restaurant.

Surrounded by sports televisions in high definition, you and your friends will love the atmosphere as you bite into one of the house specialties, such as our Smoked French Dip Sandwich. "Our goal is great food and great service and the best selection of appetizers in town," says Half Trak.

Stop in for a fun time and great eats!

1/2 Trak's Sports Bar & Grill
 3721 Mexico Rd., St. Charles, MO 63300
 636-244-3900
 www.Halftraks.com

Verlo Mattress



Happy Birthday, Mattress Man! You've seen him in parades, standing on the street corner, walking in races, dancing and waving. It's Verlo Mattress Factory Stores' very-own lovable, huggable Mattress Man. Please join us in celebrating Mattress Man's 50th birthday, a mascot who certainly has held his age well. It must be the permanent friendly smile on his face. As an icon of the Verlo Mattress Factory Stores brand, the Mattress Man has faithfully represented the company with consistent involvement in supporting community events. It was 50 years ago that Verlo Mattress Factory Stores began handcrafting mattresses one at a time for customers — a time-honored tradition that is upheld today. Stop in Verlo Mattress Factory Stores of St. Charles to extend your birthday wishes and come see what we're doing to celebrate!

Verlo Mattress Factory Stores
 3025 Boscherstown Road, St. Charles, MO
 636-949-9140
 www.verlo.com

Switch Fitness For Women



Switch Fitness is the premier women's fitness center. When it comes to your body and your time, we offer unsurpassed excellence in strength, body shaping and fitness training, featuring the world's first and only interactive Body Shaping technology, education to escalate your results in a shorter, more efficient time frame, in the most exciting, sophisticated, and chic environment in the women only market.

Switch Fitness is quick and efficient — circuit training at its best, featuring the ultimate in a high calorie burning workout. *Our machines respond to and interact with you!*

Easy in and out, hassle-free, all in less than 30 minutes, three times a week.

Switch Fitness for Women
 7110 Mexico Road, St. Peters, MO 63376
 636-970-2444
 www.switchfitness.com

PC Plan-It



Troy Frey opened PC Plan-It in 1998. He realized that many businesses needed modern technology, but were unable to afford it. Frey offers quality, reconditioned computer systems, meeting both the customer's needs and budget.

PC Plan-It has since expanded. The company offers computer sales, service and repair on all major brands. There are systems for the novice, and build-it-yourself computer systems for the more advanced users. Desktop and laptop systems are warranted for a reasonable price. Looking for a laptop for your child? There are more than 40 in the PC Plan-It showroom, starting at just \$150.

Check it all out on the web, or visit the newly expanded showroom!

PC Plan-It
 258 Ft. Zumwalt Square, O'Fallon, MO 63366
 636-272-3373
 www.pcplan-it.com

Overland Shade



Since 1946 the Pursley family of the Overland Shade Company have been providing quality custom shades, blinds and shutters and incredible customer service to St. Louis and St. Charles area businesses and homeowners. Overland Shade offers a wide range of custom window coverings from Hunter Douglas, Skandia, Graber and more. They also manufacture the popular Sheer Shade, a custom made shade that allows you to enjoy the natural light and outside view while protecting you from uncomfortable heat and glare caused by the sun. These shades are excellent for interior or exterior use.

Overland Shade really does have it all. No matter what you are looking for, skip the big box retailers and visit a real shade company. Stop by their showrooms or call for a free in-home consultation.

Overland Shade
 5911 Suemandy Dr., St. Peters 63367 • 636-477-8500
 8231 Midland Blvd., St. Louis 63114 • 314-427-5191
 www.overlandshade.com

Senior Helpers



"We specialize in providing professional care to people who wish to remain independent at home instead of moving to a facility," said franchise owner, Steve McCollum. Senior Helpers was founded in Baltimore, Maryland in 2001 in response to a growing need for professional home care. "We address this need by providing dependable, consistent and affordable care."

"As the general population continues to age and live longer, there has been an increased need for reliable home-based services. We strive to maintain the highest quality of service to enable our clients to remain independent as long as possible," said McCollum. "Our vision is to enhance the lives of our clients and their families by providing excellent care."

Senior Helpers
 1550 Wall St, Rm 232, St Charles, MO 63303
 636-925-0008
 www.seniorhelpers.com

BUSINESS SPOTLIGHT

St. Charles Sports & Physical Therapy



Welcome to St. Charles Sports & Physical Therapy!
Our Mission is to assist and direct patients to achieve the highest level of rehabilitation following an injury, illness or disease. Professionally specialized trained therapists provide one-on-one personalized treatments, to address each individual ailment in order to attain maximum potential for the patient.

We offer high-quality standards and a comfortable, caring atmosphere combined with up-to-date training to return our patients to their everyday activities as quickly and safely as possible. Treatment for the patient will be based on a team approach between the physician and our Physical Therapist staff.

www.scsportspt.com

St. Charles Sports & Physical Therapy
1840 Zumbel Rd., St. Charles 263 Centre Point Dr, St. Peters
636-947-7678 636-441-7500
1155 Wentzville Pkwy, Wentzville 939 Highway K, O'Fallon
636-332-1313 636-240-7000

Corral Performing Arts Center



Greg Faupel is a triple threat performer and theatre artist who is thrilled to educate upcoming performers and artists at The Corral. Greg provides expertise in acting, singing, dancing, phonetics and dialects, viewpoints methodology and composition, stage combat, and helping other actors prepare the perfect audition. Greg is a proud graduate of Missouri State University's musical theatre performance program. Greg has produced, created, and directed original works including *Buried Alive*, *Exposed*, and *The Ladder*. Greg has worked with Missouri State's Tent Theatre and the Arrow Rock Lyceum Theatre. He has been a part of many NYC audition workshops including Craig Carnelia, Dave Clemmons, Rachel Hoffman, and California based Lower Left Dance Company.

Corral Performing Arts Center
5055 Hwy. N, Cottleville, MO 63304
636-928-6300
www.inthecorral.com

Right At Home



Peggy Langdon, resident of O'Fallon, and Kirsten Giordano, of Lake Saint Louis own and operate Right at Home of St. Charles, a senior home care company providing care since 1995. Peggy and Kirsten have been friends for over 17 years and both have always had love and respect in their hearts for seniors and the disabled community. Their goal is to help individuals maintain their independence and dignity by providing affordable, quality in home care to assist with a variety of everyday tasks ranging from hands-on personal care such as bathing and hygiene to companionship, light housework and meal preparation.

"Improving the quality of live for those we serve."

Right At Home
1120 Rock Creek Elem. School Dr.,
O'Fallon, MO 63366
636-379-9955
www.stcharles.rightathome.net

Lang Insurance Service



Looking for a local health insurance Agent? Steven J. Lang, President of Lang Insurance Service, has been serving the St. Charles Community for over 25 years! This local Agency is staffed with Personal Health Insurance Advisors that will save you time, money, and peace of mind as they help you select an affordable health insurance plan focused on your needs. When you add their undisputable reputation for providing first class customer service after the sale, you can't go wrong. They are your local source for Individual, Family, Group and Senior health insurance protection for your family and your business!

Call Lang Insurance Service today and give them the opportunity to show you "Health Insurance Made Easy!"

Lang Insurance Service
636-441-0211
www.langinsurance.com

If lawyers are disbarred and clergymen defrocked, doesn't it follow that electricians can be delighted, and musicians denoted?

-George Carlin
US comedian and actor
(1937 - 2008)

*You made us laugh out loud, George.
Rest in peace.*

Your BUSINESS SPOTLIGHT Here!



Give your business that personal touch with a business spotlight advertisement. You will be surprised at how effective and affordable this type of ad can be. Our readers like to know the person behind the service or product you are offering. As an advertiser, this type of advertisement gives you the opportunity to tell our readers something about yourself and your business.

This special "spotlight" section runs every month in both the Community News and the O'Fallon Community News. Call us today to find out how you can give your business that personal touch.

Call 636-379-1775.

Your Business Name
Address
Phone
Web site

First State Bank of St. Charles



Meet Bob Sanders, O'Fallon Branch Manager at First State Bank of St. Charles. After 35 years of banking experience, Bob enjoys the personal relationships with customers and the friendly atmosphere at First State Bank. "To me, First State Bank personifies 'personal banking' - we make time to respond to customers' questions and yet still have all the same convenient and time-saving products as truly larger banks. We are a community bank that truly makes the effort to meet every customer's needs."

First State Bank has served St. Charles County for more than 140 years through locations in St. Charles, O'Fallon and Lake Saint Louis. Member FDIC.

First State Bank of St. Charles
636-940-5555
www.fsbfinancial.com

Lovely Lullabies Boutique



Every mother dreams of a custom nursery for her new baby. Lovely Lullabies, a new business on Main Street in St. Charles, will help you create your dream nursery with a full selection of beautiful, well-crafted furniture, bedding, décor, accessories and toys. All of their products are quality items chosen for safety, style and functionality. Most of the furniture is designed to grow with the child. Lovely Lullabies provides a warm and personal shopping experience and unique items not commonly found at the big box retailers. For shoppers in a pinch, they offer the "Rescue Me" service for quick gift selection and wrapping in as little as two hours. Other services include nursery bedding design software, delightful fabrics, embroidery work, mural artist referrals, toys and so much more. Come visit a custom nursery shop like no other in the area.

Lovely Lullabies Boutique
222 No. Main St., St. Charles, MO
636-946-6500
info@lbbaby.com

The American Diabetes Association Launches a Bold New Attack Against the Growing Threat of Diabetes

St. Louis, MO — In order to keep pace with the growing number of Americans with diabetes, the American Diabetes Association (ADA) invites communities nationwide to Step Out to Fight Diabetes in their brand new fund-raising walk. Registration is open at diabetes.org/stepout.

Formerly known as America's Walk for Diabetes, Step Out to Fight Diabetes is a one-day walk in more than 200 cities this fall. With nearly 24 million Americans living with diabetes, ADA created Step Out to Fight Diabetes as an aggressive attack against the disease—and a cry of hope for those affected by it.

In the St. Louis metro area we're dedicated to finding a cure for diabetes," said Amy Stephan, associate manager for the American Diabetes Association. "Our fund-raising efforts will help fund the ADA's research, education, and advocacy efforts, both in our community and across the country."

"Step Out to Fight Diabetes has a wide appeal and a fresh look," said Darlene Cain, Chair of the Board. "With so many Americans affected by diabetes, we want to reach out to them, educate them and bring a

new generation of people into the ADA family. Working together is the only way we will find a cure for this disease."

At a Step Out to Fight Diabetes event, routes range from half a mile to six miles and are accessible to people of all ages and levels of mobility. Along the walk, participants are supported by volunteers offering water, snacks, entertainment and encouragement. The event draws a large contingency of individuals and teams, comprised of families, friends and corporations, all walking and raising money in support of ADA.

Step Out to Fight Diabetes is being sponsored locally by Sanford Brown College, Missouri College, Harrah's Casino, Pfizer, Novo Nordisk, Walgreens, Save A Lot and many more local businesses. National sponsors of the event include Cary's Sugar Free Syrup, Diet Rite and Kmart Pharmacy. All funds raised from Step Out to Fight Diabetes are used in support of the Association's mission: to prevent and cure diabetes and to improve the lives of all people affected by diabetes.



Diabetes is the fifth-deadliest disease in the United States. Since 1987 the death rate due to diabetes has increased by 45 percent, while the death rates due to heart disease, stroke, and cancer have declined. Due to the fact that diabetes manifests itself in two main types, type 1 and type 2, the disease is often misunderstood by the public.

Local Step Out events include Saturday, Sept. 6 on the Southern Illinois University Edwardsville Campus; Saturday, Sept. 27 at Russell Commons Park in Alton, IL and at Frontier Park in St. Charles; Saturday, Oct. 11 at St. Charles Community College and Saturday, Oct. 18 at Creve Coeur Lake.

To be a part of the cure, visit diabetes.org/stepout or call 888-DIABETES. Step Out to Fight Diabetes offers an exciting event experience for volunteers, participants and all those who enjoy the feeling of being part of a community.

For more information, please call the American Diabetes Association at 1-800-DIABETES (1-800-342-2383) or visit www.diabetes.org.

Missouri Botanical Garden's Café "Sassafras" Named States' First Certified Green Restaurant

St. Louis - The Missouri Botanical Garden's cafe, Sassafras, has become the first Certified Green Restaurant™ in the state of Missouri. The official designation was made by the Green Restaurant Association (GRA), a national non-profit organization whose mission is "to create an ecologically sustainable restaurant industry."

"The Garden takes pride in this certification, which is another way we stand behind our mission to pre-

serve the planet," said Garden President Dr. Peter Raven. "As stewards of the Earth, it is of great importance that we continually seek out ways to become more environmentally friendly in all of our practices."

The GRA performed a thorough evaluation of existing practices in the café to begin the certification process. After the assessment, the organization recommended steps the Garden and Catering St. Louis, which operates Sassafras, could take to improve upon its sustainable practices.

The restaurant was remodeled in early 2005 to incorporate environmentally friendly materials. Tabletops and divider walls are made of recycled paper products and renewable agricultural resources. Areas around the service counter are made of natural cork oak bark, one of the best-rated sustainable materials available. Ceiling tiles contain over 70-percent recycled content. Ceiling lights use energy efficient fluorescent bulbs, and accent lighting uses compact fluorescent bulbs (CFLs). Natural light is maximized through skylights and windows.

Visitors will also find napkins and menus made from 90-percent post-consumer recycled paper, with no chlorine bleach. Food is served on colorful, washable dishware with real cutlery, so there is less disposable waste. Aerators installed on kitchen sink equipment help to conserve water.

Sassafras staff recycle all paper, glass, plastic, aluminum, steel, cardboard and

more. Visitors are also encouraged to recycle waste in marked bins at the restaurant entrance. To-go orders are served in recyclable paper boxes, as opposed to polystyrene containers.

The Garden is required to make four recommended café improvements per membership year, to maintain its standing as a Certified Green Restaurant.

"The café at the Missouri Botanical Garden joins over 260 restaurants nationwide in making a commitment to sustainable practices," said GRA President Michael Oshman. "Sassafras already had in place many of the kinds of measures we recommend when the Garden joined the GRA. We are proud to showcase their example, and we look forward to working on more challenging environmental measures together."

"The Garden recognizes the need to continually learn about and incorporate sustainable practices," said Jean Ponzi, program manager at the EarthWays Center, a division of the Garden. "Going green is a process. We're striving for ways to grow more sustainable in all that we do, especially in our service to visitors."

The Missouri Botanical Garden is open daily from 9 a.m. to 5 p.m. Lunch is served in the Sassafras café from 11 a.m. to 3 p.m. Light snacks and beverages are available throughout the day. Brunches are offered yearly on Easter and Mother's Day.

Admission to the Garden is \$8; residents of St. Louis City and County are \$4 adults and \$2 seniors. Children age 12 and under and Garden members are free.

For more information on the Garden, visit www.mobot.org or call the recorded line at 314-577-9400. For more information on the Green Restaurant Association, visit www.dinegreen.com.



Abbey Heating and Cooling
Commercial & Residential Systems

Call us for a quote on a new, efficient system today!
Financing available and one year same as cash available.
For a comfortable home or office, give us a call!
636-265-5915
www.abbeyhc.rheemteam.net

Come Enjoy a Weekend of Fun
in Celebrating...
The Wentzville Community Club
75th Anniversary Homecoming
and support your favorite not-for-profit group at the same time!
August 30 & 31

Saturday Activities:
Parade 10 am
Meet & Greet past Homecoming Queens: Noon-2 pm
Square Dance - demos & dancing
Entertainment by Concert Arts Association
Car Show: Registration 1-4 pm
Awards: 5 pm (public votes)
Dance to Hudson & the Hoo Doo Cats: 7-10 pm (\$5 to dance)

Sunday Activities:
Opens: Noon
Entertainment provided by:
St. Louis Harmonica Club
Asaph's Brothers
Closes: 6 pm

BOTH DAYS:
Food - Game Booths
Inflatables

500 West Main, Wentzville • 636-332-8296
www.wentzvillefleamarket.org

Join Us For Our Grand Opening Celebration!

Saturday, August 23, 2008 from 9:45AM-9:30PM



the
MEADOWS
AT LAKE SAINT LOUIS

premier shopping. sophisticated style.

Please join us for music, food, fireworks
and more! Fun for the whole family!

- | | | | | | | |
|-----------------|---------------------|-----------------------|-------------------|----------------|--------------|---------------------|
| Banana Republic | BC's Kitchen | New Balance St. Louis | Bed Bath & Beyond | Select Comfort | Caché | Christopher & Banks |
| Chico's | Coldwater Creek | Victoria's Secret | Gymboree | Claire's | Bachrach | Clarkson Jewelers |
| Jos. A. Bank | New York & Company | Lenscrafters Optique | Puddle Ducks | C.J. Banks | Aéropostale | Eddie Bauer |
| Yankee Candle | The Walking Company | Bath & Body Works | Kay Jewelers | Salon Kashmir | Sunglass Hut | Talbots |

Now Open **BC's Kitchen** a bill cardwell restaurant
Coming Soon **Ann Taylor Loft, Old Navy & Backwoods**
Fall 2010 **Von Maur Department Store**

Sports You See... With Gary B.



Gary Baute

RAMS PLAY HOME EXHIBITION GAME SUNDAY THE 23RD

The St. Louis Rams will show their talents to the hometown fans on the 23rd against the Baltimore Ravens at the Edwards Jones Dome at 7 p.m. in an exhibition contest.



Coach Scott Linehan has had two games so far to check out all the newcomers and the veterans. Many of the starters will start seeing more playing time as the exhibition winds down.

~~~Regular season almost here

### TIME IS SHORT FOR RASCALS TO MAKE UP GROUND IN STANDINGS

The River City Rascals professional/minor league baseball team have been playing in the Frontier league in O'Fallon at T.R. Hughes ballpark for ten years.

As the month of August rolls on, the club has put together an impressive series against tough competition to gain some ground toward the playoffs.



Some of the squad has placed themselves high in the league statistic categories. ANDREW SWEET ranks 10th in batting average, hitting at a .317 clip.

LUKE BARGANIER (pictured at right) has seven triples tying him for third in the league and with 23 doubles. BRAD HOUGH is second.



Luke Barganier  
Courtesy www.rivercityrascals.com

Frontier West Division Standings as of 8-10:

| Team        | W  | L  | Games Behind | Streak | Last 10 |
|-------------|----|----|--------------|--------|---------|
| Southern IL | 44 | 31 | ...          | W-1    | 5-5     |
| Windy City  | 42 | 32 | 1.5          | L-1    | 9-1     |
| Gateway     | 40 | 35 | 4.0          | L-1    | 6-4     |
| Rockford    | 39 | 36 | 5.0          | W-2    | 8-2     |
| RASCALS     | 37 | 38 | 7.0          | W-2    | 7-3     |
| Evansville  | 32 | 43 | 12.0         | L-2    | 3-7     |

All home games played at T. R. Hughes in O'Fallon @ 7 p.m. (6 p.m. on Sundays)

8-26/27/28, Tues/Wed/Thurs, against Gateway Grizzlies (LAST HOME GAMES)

~~~The clock is ticking

BOXING AND MIXED MARTIAL ARTS AT THE VIKING FRIDAY THE 22ND

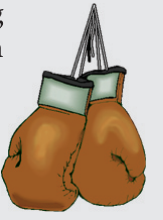
On that Friday the main event will see KEVIN ENGLE boxing MIKE "MAD HANDS" WORD who is the only fighter to hand him a loss.

Martial Arts will also be present in the ring. Ryan Coyne, David Knobl, Rocky Venchen and Josh Flowers are a few on the card.

Rumble Time Promotions is sponsoring the Friday Night Fights held at the Viking Hotel.

Visit www.rumbletimepromotions.com for all the details.

~~~Show time



### BULLDOGS FOOTBALL

The St. Louis Bulldogs play in the North American Football League, a self-sustaining level of adult football that is an amateur league and a developmental league for colleges and the pros.

The St. Louis Bulldogs play in the 11-man outdoor tackle football league and have the most wins by an active football franchise in Missouri Minor League history.

They have accumulated 15 consecutive postseason appearances with two league, 3 conference and 7 division championships.

They are coached by minor-pro football Hall of Fame Coach Greg "Chief" Moore who was also a part of the Rage football group.

North American Football League 1 (NAFL1)-Heartland Division as of 8-10:

| Team                      | W | L | T | Points Scored | Points Allowed |
|---------------------------|---|---|---|---------------|----------------|
| Midwest (MO) Titans       | 6 | 0 | 0 | 177           | 64             |
| St. Louis (MO) Bulldogs   | 3 | 1 | 0 | 127           | 41             |
| Missouri Wildcats         | 3 | 2 | 0 | 115           | 82             |
| Kansas City (MO) Shockers | 0 | 4 | 0 | 58            | 76             |

Bulldogs ([www.stlouisbulldogs.com](http://www.stlouisbulldogs.com)) home games on Saturdays at Oakville High School @ 7 p.m.

Sept. 13 against KC Shockers, Sept. 27 against Indiana Warriors

~~~Outdoor hard hitting action



"Take Me Out to the Ball Game" Celebrates 100th Anniversary

(NewsUSA) - The crack of the bat. The intensity of the game. The roar of the crowd following the final out. The most competitive stretch of America's pastime is upon us. But there is more to cheer about than your favorite team's chance at the World Series. 2008 marks the 100th anniversary of the most iconic and beloved of all American sports anthems; "Take Me Out to the Ball Game."

The legacy of "Take Me Out to the Ball Game" extends beyond the joy it has brought to listeners for the last 100 years. The song is directly responsible for the formation of The ASCAP Foundation, a charitable organization dedicated to supporting American music creators and encouraging their development through music education and talent-development programs.

The ASCAP Foundation was incorporated in 1975 when Amy Swor Norworth, widow of Jack Norworth, the lyricist who penned "Take Me Out to the Ball Game" with composer Albert Von Tilzer, left a generous bequest to ASCAP to establish the Jack and Amy Norworth Memorial Fund to assist deserving, young composers through the use of royalties from "Take Me Out to the Ball Game."

"The deep, emotional connection that the American public has with 'Take Me Out to the Ball Game' is a testament to the power of music to shape our experiences and to bring us together," said Karen Sherry, vice president and executive director

of The ASCAP Foundation. "The place that this song holds in the history of American music is all the more special, given its role in helping many others to pursue the craft of songwriting that Jack Norworth himself so loved. All of us at The ASCAP Foundation are indebted to his generosity and celebrate this amazing milestone, as we continue our work of encouraging young songwriters to pursue their dreams."

"Take Me Out to the Ball Game," which is traditionally sung during the seventh-inning stretch at baseball games, has become a mainstay in the American songbook. Here are just a few fun facts associated with the song:

- It is the third most frequently sung tune

in the U.S. after "Happy Birthday" and "The Star Spangled Banner."

- It has sold over 10 million copies in sheet music and/or recordings.
- Over the past 100 years, more than 400 musicians from every conceivable genre have recorded the song.
- The original lyrics are now part of the collection at The National Baseball Hall of Fame Library in Cooperstown, New York.

Sports Bar & Grill

1/2 TRAK'S

A SPORTS EXPERIENCE IN HIGH DEF

Great Food! Great Service!

TRY OUR SMOKED FRENCH DIP SANDWICH YOU'LL LOVE IT!

Best Selection of Appetizers in Town!

SPECIAL!

Buy One Basket ~ Get The Second Basket of equal or lesser value FREE!

Exp. 8/31/08

3721 Mexico Road • St. Charles, MO 63300
636-244-3900 **Halftraks.com**

FREE Trial Class

Recreational Gymnastics • Tumbling Classes
10,000 + sq ft facility • Open viewing for families
Full Size & Scaled Down Equipment
Ages 18 Months to 18 Years

Northside Gymnastic Academy

Janet Besselman/Owner
26 Years Coaching Experience
636-379-3599

Northside Gymnastic Academy • 1317 Tom Ginnever • O'Fallon

**Free Trial Class is for new students only.*

Steve Coogan Talks About "Hamlet 2" at the San Diego Comic-Con

By Steve Bryan

Even though he's well-versed in comedy, actor Steve Coogan did have some reservations when he first saw the title of his latest project, "Hamlet 2." "I must admit when I heard the title of it, I thought it sounds like a terrible title. It sounds kind of brainless, to call something 'Hamlet 2,'" Coogan said during a recent roundtable interview at the 2008 San Diego Comic-Con.

In the film, Coogan is Dana Marschz, a failed actor who makes a meager living teaching drama at West Mesa High School in Tucson, AZ. After staging a few disastrous adaptations of popular movies, Marschz decides to go for broke by writing and producing a sequel to Shakespeare's "Hamlet."

"When I started reading it, the first thing that made me laugh was that he was staging a production of 'Erin Brockovich.' I really, really laughed at that. There's something about the choice of that movie for somebody to be putting it on as a stage play that told me straight away who the character was," Coogan said.

Dana Marschz pens a sequel to "Hamlet," a play in which the major characters all die at the end. "I remember hoping that tonally, the rest of the script would stand up to that. And it did," Coogan said. "I've read a lot of comedy scripts and I've been involved in comedy for a long time in the U.K. and I'm kind of a jaded audience, not easily pleased when it comes to comedy."

Coogan also said the script by Andrew Fleming and Pam Brady just made him laugh an awful lot. "It avoided cliché. If anything, it satirized cliché because it satirizes inspirational teacher movies," he said. "But then, of course, it comes full-circle

and becomes one itself at the end."

Coogan has a strong following in both the United Kingdom and the United States, especially from his appearances as fictional television host Alan Partridge. American audiences also may recognize Coogan from his starring roles in "24 Hour Party People" and "Around the World in 80 Days" as well as his recent supporting role in the action/comedy "Tropic Thunder."

Coogan said that smart and cynical often go hand-in-hand, but "Hamlet 2" also had real heart to it. "In Great Britain, I play a lot of characters who are pretty nasty people. They don't have that many redeeming qualities and this guy (Dana Marschz) is much more vulnerable, and therefore it was much more interesting and challenging for me to play it because it was slightly outside what I normally do," he said.

As part of Marschz's play, Coogan gets to dress up as a sexy, "Rock 'n Roll" version of Jesus. "Originally, I wasn't supposed to be in the school play, but Andy (director Andrew Fleming) said 'We've got to get you onstage.' He said 'How do you feel about dressing up as a kind of sexy Jesus?' and I was like 'Oh my God,'" Coogan said.

"A part of me was a little nervous because if you do something like that, you have to head straight at it; you can't flinch. You really have to commit yourself to do it, otherwise you're going to look like an idiot in a non-comedy way, which is what you really want to avoid," he said.

Because of its mature themes, edgy comedy and a few explicit songs, "Hamlet 2" is bound to raise a few eyebrows. Coogan said there's a kind of comedy where you try to be offensive for the sake of being offensive.

"There's another kind of comedy where you can tell where it comes from, that it has a kind of heart and there's a good naturedness beneath it," he said. "This movie has a kind of generosity of spirit, even though there are these things that, in another context, could be very offensive."

"Hamlet 2," rated R for language including sexual references, brief nudity and some drug content, opens nationwide on Friday, August 22.

IT'S ABOUT

New 'e-Resident' Service Online at St. Peters Website

St. Peters residents have another reason to visit the City of St. Peters' website, and another reason to get a free Resident Privilege Card. The new "e-Resident" service at www.stpetersmo.net makes it possible for St. Peters residents to send comments to elected officials and lodge "concerns" at any time. Any St. Peters resident with a valid Resident Privilege Card may log in and use the service.

The service is available by clicking on the e-Resident button on the City's home page, and entering the last name and resident number as they appear on the Resident Privilege Card. Residents can then send comments to St. Peters elected officials or register concerns with the City's Citizen Action Center.

"With this online technology, we're 'opening up the floor' to residents 24-7," said Mayor Len Pagano. "You don't have to mail a letter, or wait for the next Board of Aldermen meeting, or come to City Hall if you don't want to make the trip. If you have Internet access and a Resident Privilege Card, you can easily send your thoughts or concerns from the comfort of your home, day or night."

Resident Privilege Cards can be obtained at City Hall, One St. Peters Centre Blvd., and at the St. Peters Rec-Plex, 5200 Mexico Road, during normal business hours. To obtain the card, residents need two proofs of residency, such as a driver's license and utility bill displaying the current address. Learn more about how to obtain Resident Privilege Cards by clicking on the "e-Resident" button on the City's home page at www.stpetersmo.net.

Alderman Gus Elliott, the Board of Aldermen's representative on the City's E-Government Advisory Committee, said e-Resident helps open a discussion between St. Peters residents and their government. "With this new e-Resident service, we've taken our first big step toward a fully interactive Virtual City Hall," Elliott said. "Our residents can use the same great City of St. Peters website we all rely upon for City information to go the other direction. With a few keystrokes, you can share a thought with your alderman, enter a concern, or make a suggestion. Just watch. Folks are going to start wondering how we ever got by without e-Resident."

The City of St. Peters' concern system allows residents to lodge concerns related to City of St. Peters services, and for City staff to tackle the issue as soon as possible. As with all concerns received by

the City of St. Peters, the Citizen Action Center receives the e-Resident concern and forwards it on to the City department best able to handle the issue. City staff's goal is to respond to the concern within three business days.

Residents using e-Resident also can send a message to any

See E-RESIDENT page17

CONGRATULATIONS To Our Ticket WINNERS!

To: **Kenny Loggins**

- ~ Katherine Tegeler - St. Louis
- ~ Jerry Sanders - St. Charles
- ~ Melissa Bippen - St. Peters
- ~ Mike Maraccini - St. Charles
- ~ Ken & Rita Beech - O'Fallon
- ~ Sandy Niewald - O'Fallon
- ~ Laura Musket - Foristell

Watch for your next chance to WIN!



Jim TRENARY An American Revolution

CHEVROLET

GM Certified Technicians
Free Shuttle Service

10% OFF ALL TIRES
Free Alignment Check & Multi-Point Inspection with any tire purchase.
We stock tires for all makes & models.
Exp. 9-30-08

OIL CHANGE \$29⁹⁵* Castrol

Get a Castrol Syntec Blend oil change with filter. Vehicle charging system check and a GM Mr. Goodwrench multi-point inspection. *After mail-in rebate. Ad prices may vary depending on year, make & model. Exp. 9-30-08

NOW OFFERING NITROGEN!
Performance Matters! Proper Tire Inflation will...
• Enhance Handling • Reduce Fuel Consumption • Extend Tire Life
\$39⁹⁹ (up to 5 tires) Exp. 9-30-08

Toll Free
1-866-776-7822

501 Auto Mall Drive | O'Fallon MO
Service Hours: 7a - 6p Mon. - Fri. | 7a - 12p Sat.

www.jimtrenary.com

ST. PETERS Chamber of Commerce Proud to Support The St. Peters Chamber of Commerce

ST. PETERS REC-PLEX
Summer Sizzler DEAL

Purchase a Rec-Plex Pass* between NOW and Labor Day & receive:

- Free outdoor pool passes (residents & non-residents)
- Rec-Plex membership good through Labor Day 2009

*New members only.



For more information call 636.939.2FUN, or visit stpetersmo.net

... St. Peters Chamber

* Business
* Community
* Growth

ST. PETERS
Chamber of Commerce

Community News...A Proud Media Sponsor of the St. Peters Chamber of Commerce

Technology Committee Schedule

August 21 – David Hall, Lindell Bank; “IT Challenges in Banking”

September 18 – Barbara Keim, SCCC, “Technology Challenges facing non-profit organizations”

October 16 – Matt Hiebert, MODoT, “How MoDOT uses ‘widgets’ technology to improve communication”

November 20 – New Frontier Bank – IT Challenges

All meetings are in the Lindell Bank Conference Room from 1-2 p.m.

As always, please RSVP in advance so pizza and drink accommodations (\$5) can be made. Pizza is ordered on the # of actual RSVPs. Reservations can be given to Lori at St. Peters Chamber 636-447-3336.

Motorcoach to Tunica for Golfing, Shopping, and Casino Fun

Take a little break this fall by joining the St. Peters Rec-Plex motorcoach trip to Tunica, Miss., for some fun and relaxation. This trip will include a three-night stay at the Resorts Casino, leaving Sunday, September 28, and returning on Wednesday, October 1.

The cost is \$160 per person based on double room occupancy, and includes 3 meal/buffet vouchers, a \$5 cash coupon, motorcoach transportation, driver service and gratuity.

The motorcoach trip will

leave from the west parking lot at St. Peters City Hall at 7:30 a.m. on Sept. 28, and make its first stop at a casino before check-in at the Resorts Casino.

A golf course is located across from Resorts Casino, plus a covered walkway leads to Hollywood’s Casino, filled with movie memorabilia. Shuttles will also be available for a small fee to go back and forth

between other favorite casinos in Tunica or back to the resort to sit back and relax. Bus transportation will be provided for a trip to the Casino Factory Shoppes Outlet Mall.

The motorcoach will be heading out of Tunica at 10 a.m. on Oct. 1.

To register, call the Rec-Plex at 636.939.2386, or go online to stpetersmo.net and sign up using Rec-Connect.



St. Peters Chamber Calendar of Events

8/21/08

After Hours

Business Card Exchange
5-7 p.m.

Applebee’s Restaurant
6170 Mid Rivers Mall Drive

8/21/08

Technology/Communications Meeting
12-1 p.m.
Lindell Bank
Conference Room
5500 Mexico Rd.

9/2/08

General Membership Meeting
11:30 a.m.-1 p.m.
Ameristar Casino
Conference Center

These events are some of the many benefits of a Chamber membership.

For membership information please contact
Valerie Momeno at
636-447-3336 or email
vmomeno@stpeterschamber.com

To RSVP for an event, call
Lori at 636-447-3336 or email
lhellrich@stpeterschamber.com

E-RESIDENT from page 16

combination of the Board of Aldermen and Mayor all at once. The message can alert elected officials to an issue, make a suggestion, send appreciation, etc.

Resident Privilege Cards also provide St. Peters residents with many other privileges, such as free yard waste disposal at Earth Centre, free compost up to 2 cubic yards annually, park pavilion reservations, and lower rates on St. Peters pool passes, Rec-Plex passes and many other City of St. Peters-sponsored programs.

Other e-Services featured at www.stpetersmo.net include BillPay for online utility payments and

Rec-Connect, a service that allows people to view and sign up for recreation programs and park facilities. The website also has SPTV government programming available both live and on demand.

In June and July 2008, the City of St. Peters’ website averaged almost 150,000 web page views.

“More and more business is done over the Internet all of the time. It only makes sense that we should take advantage of the technology available and make it easier than ever for our residents to carry out their City business,” Mayor Pagano said.

“Great Southern Travel really appreciates how involved the Chamber is in the community. They are providing so many opportunities to showcase our business to the other members and to the general public - and at such reasonable prices too! We are very excited to be members of the St. Peters Chamber of Commerce!”

Jan Beal
Great Southern Travel

Thoughts
from our
Members

Keep Up with the Latest Technology

Take advantage of the many Chamber benefits and services available to you and your company to help you stay current, informed and help your business run smoothly.” - Randy Davies, Ambassador Chairman

We often talk and write about the many committees and benefits available to Chamber members. In response we too often hear, “I just do not have time for committee meetings “. But, what if a one hour meeting once a month could make a difference in the smooth flow of your systems and use of technology, help with down time cost containment, and educate you on the compliance of your business ??? WOW !! What great information.

TECHCOMM is a committee that is available to any member of the St. Peters Chamber. Some of the sharpest minds and businesses in the technology sector in St. Charles County meet each month to discuss emerging technologies, new laws affecting technology and communications, new products, software, new services, and problem solving. For example, the current agenda for the next few months will feature speakers discussing topics such as, Asset Recovery, proper and LEGAL data destruction, V.O.I.P, I.T. Challenges in banking, I.T. and non-profits, and many more timely and relevant topics.

Too many small businesses are flying by the seat of their pants when it comes to their computer systems and use of technology. They often do not know how to back up their data and sensitive files, stay compliant with new laws, dispose of old equipment, or even know what to do when their systems go down. You’ve got questions, we’ve got answers ! Get educated.

If you are a technology or communications company, an employee of such a company, the department head of I.T for a company, or even just a curious person like myself about the technology topics, then you need to take advantage of TECHCOMM each month. Meetings are held at Lindell Bank on Mexico Road in St. Peters and the cost is only \$5 for pizza and soda. Reservations must be made by contacting Lori Hellrich at the St. Peters Chamber office (639-447-3666) or lhellrich@stpeterschamber.com.

ST. PETERS
Chamber of Commerce

Proud to Support The
St. Peters Chamber of Commerce

Is your company stockpiling surplus hard drives and related media in need of a HIPAA, FACTA or GLB compliant disposal solution?

For All Your Hard Drive and Related Electronic Media Destruction Needs



EPC’s new Data Destruction & Recycling Vehicle (DDRV) is the nation’s top solution for on-site destruction. Contact a representative of EPC’s Asset Recovery Solutions department today to discuss how we can develop a program based on the following features and processes:

Features:

- On-site destructions are scheduled by EPC Asset Recovery Solutions sales team members
- Destruction is performed ON-SITE within the confines of client docks or related work area
- Processing on-site fully eliminates chain of custody concerns for clientele
- Entire process is recorded within the EPC database – a hard copy is presented to client upon completion of project
- EPC personnel and equipment need only the space to work – power, etc. is provided by EPC
- Media destruction includes hard drives to 2 inches in thickness, tapes, cell phones, PDAs, etc.

Project Process:

- Hard drives are counted, OEM and serial number recorded into database
- Drives are mechanically shredded within EPC truck bed shredder @ \$9.00 per drive
- Certificate of destruction with all serials recorded is provided client
- Tapes, software and related media are weighed and recorded into database
- Tapes, software and related media are shredded within EPC truck bed shredder @ \$.50 per lb.
- All nickel-sized, shredded residual is recycled by US down stream providers
- Certificate of destruction with total weight recorded is provided client
- In every case, witnessing of the destruction is welcomed and highly recommended.

3941 Harry S Truman Blvd. St. Charles, MO 63301 www.epcusa.com

Call for more information today -- 800-235-1046

COMMUNITY NEWS COUPON CRAZY

DELIVERING FANTASTIC SAVINGS ALL YEAR

BONUS COUPON • BONUS COUPON • BONUS COUPON • BONUS COUPON

\$10 OFF SERVICE OVER \$100
\$20 OFF SERVICE OVER \$200
\$30 OFF SERVICE OVER \$300

LOU FUSZ
CHRYSLER • JEEP • DODGE
3480 HWY K • O'FALLON, MO • 636-442-8100

*Advanced appointment required, cannot be used in conjunction with any other offer. Offer expires 8/31/08.

Autobahn Full-Serv Express CARWASH 636-925-9855

\$5 OFF Full-Serv Supreme w/Hand Dry Car Wash Package. With this coupon. Not valid with any other offers. Exp. 8/31/08.

\$3 OFF Any Full-Serv Wash w/Hand Dry Car Wash Package. With this coupon. Not valid with any other offers. Exp. 8/31/08.

3160 Elm Point Industrial Drive (Hwy 370, Exit Elm, Right at Elm Point, next to Chuck & Burger)

St. Catherine RETIREMENT COMMUNITY

ONE Complimentary Dinner with Tour

To Learn How Affordable Retirement Living Can Be Call... **314.838.3877**

The Life Style You Want... At The Price You Need!

3350 St. Catherine Street Florissant, MO 63033
A Non-Profit Retirement Housing Foundation Community

DeSmet Retirement and Assisted Living Community

It's Time To Relax & Enjoy Life!

1425 N. New Florissant Rd Florissant, MO
314.838.3811

QUALITY SENIOR HOUSING AT AFFORDABLE PRICING

A Non-Profit Retirement Housing Foundation Community

KEEVEN APPLIANCE
Family owned and operated since 1955

\$5 OFF Any Service Call

1879 Old Hwy 94 S., St. Charles
636.949.2555
3350 Parker Rd. Florissant
314.837.2723



1/2 Trak's Sports Bar & Grill

BUY ONE BASKET GET THE SECOND BASKET OF EQUAL OR LESSER VALUE FREE! Exp. 8/31/08

3721 Mexico Road St. Charles, MO 63300
636-244-3900 Halftraks.com

If your CHILD is STRUGGLING in school, SUCCESS starts HERE.

Huntington LEARNING CENTER 1-800-CAN LEARN

\$75 OFF DIAGNOSTIC TESTING

3449 Pheasant Meadows Drive Suite 112, O'Fallon, MO 63368
636-272-2716

2772 Muegge Road St. Charles, MO 63303
636-928-3900

For Seniors 62+ **FREE BED & BREAKFAST** for Two with Tour (\$85 value)

CALL FOR DETAILS **314-653-4807**

Village North Retirement Community
BIC HealthCare

Jim TRENNARY An American Revolution CHEVROLET

501 Auto Mall Drive O'Fallon MO

Toll Free **1-866-776-7822**

"For All Your Flooring Needs"

WHOLESALE FLOORING U.S.A.
Carpet, Vinyl, Ceramics, Hardwood, Laminates, Area Rugs

Hours: M-W-F 9-7 T & Th 9-5, Sat 9-3

636.379.5859 823 W. Terra Lane O'Fallon, MO 63366
John Dickherber • Owner/Manager

Receive ONE free week.*

*Some restrictions apply. Expires 8/31/08.

St. Charles YMCA
636-928-1928

NOW OFFERING NITROGEN

Performance Matters! Proper Tire Inflation will...

- Enhance Handling
- Reduce Fuel Consumption
- Extend Tire Life

\$39.99 (up to 5 tires)

Exp. 9-30-08

OIL CHANGE Castrol Only **\$29.95**

Get a Castrol Syntec Blend oil change with filter. Vehicle charging system check and a GM Mr. Goodwrench multi-point inspection. After mail-in rebate.

Ad prices may vary depending on year, make & model. Exp. 9-30-08

Something to smile about!

\$89 SPECIAL

Comprehensive Exam • Cleaning • X-Rays (\$250 Value)

Valid for new patients only. Cleaning will be done in absence of periodontal disease. Valid with coupon only. Not valid with any other offers. Mention Code CN89. Exp. 8/31/08

3739 Elm St. • St. Charles 1654 Bryan Rd. • O'Fallon (near Hwy 370 & Elm St.) (corner of Folsom & Bryan)
636-916-4848 636-978-4848
Armen Tumanyan, D.M.D.
www.drartumanyan.com

COMMUNITY NEWS
COUPON CRAZY

Watch Your Business Grow



FUN FACTS: Events that occurred during the month of August

- Cookies baked successfully on a vehicle's dashboard during heat wave, Bedford, N.H., 2006
- Pres. Carter signed bill to create U.S. Dept. of Energy, 1977.
- Hotline between White House & Kremlin installed, 1963.
- First Smokey Bear poster produced, 1944.
- First prisoner arrived at Alcatraz, 1934.
- U. S. dropped atomic bomb on Hiroshima, Japan, 1945.
- 232-day Baseball Strike, causing World Series to be canceled, 1994.
- Mona Lisa stolen, 1911.
- Nat Turner's slave rebellion began, 1831.
- 100 mile-per-hour winds, Lake County, Ind., 1965.
- Ranger lunar probe launched, 1961.

Oldest Pick



Chancey, an albino Appaloosa is born when a "fire star" shoots across the sky. His mother tells him that's a sign he's destined to be wise, gifted and beautiful. The colt grows up and tells his life story in "Chancey of Maury River," by Gigi Amateau.

The prediction Chancey's mother makes seems correct. Chancey becomes a trusted school horse, a cooperative mount. When the gelding is 20, the ranch owner falls on hard times and has to sell her land. No one will buy Chancey because of his age. The slaughter house looms ever present, as does concern that something is wrong with Chancey's eyes.

The horse's star shines bright again when a young girl finds a special place in her heart for the gelding, and service becomes Chancey's gift to others. Young readers who enjoyed the classic, "Black Beauty," will fall in love with "Chancey of Maury River," another tale told straight from the horse's mouth.

Community News is proud to offer our readers "Book Buzz." This column will feature great books for children in three categories: Youngest Pick (early childhood to the first or second grade), Middle Pick (elementary school children) and Oldest Pick (middle school children). Community News will run one pick each week. Enjoy!

Reprinted with permission, Missouriian Publishing Company. Copyright 2008.

The Wing Ding People Present...

BCI's 15th Annual Golf Tournament and Spa Adventure

Monday, September 15

BCI Foundation **WINGHAVEN COUNTRY CLUB**

BCI is the largest employer of adults with disabilities in Missouri. Our employees work on light production, repackaging and community employment. In the first quarter of 2008 we packaged 2.7 million canisters of Lysol Wipes and nearly 1700 tons of product for one customer alone.

All proceeds from the Golf Tournament benefit BCI.

Contact Leslie at 636-978-4300, ext. 111

Presenting Sponsors: Rx Systems, Inc., LAUER CONSTRUCTION INC., METRO THE SALON & SPA





Stopping the Skin Cancer Epidemic Starts with Children

New York, NY - Children should be taught from an early age to be aware of the problems associated with sun exposure and the need to use sun protection. Parents can teach their children early sun protection techniques that will help prevent skin cancer throughout their lives.

Skin cancer rates in the United States are increasing at epidemic levels. One in 55 people will now be diagnosed with melanoma, the deadliest form of skin cancer, during their lifetime. This is particularly important for children because one blistering sunburn in childhood more than doubles a person's chances of developing melanoma later in life.

"We believe the rise in melanoma is due to sun exposure and sunburns in childhood, increased sun exposure over time and the use of tanning beds," said Perry Robins, MD, President of The Skin Cancer Foundation.

The vast majority of skin cancers are preventable with good sun protection habits.

The Foundation recommends the following methods of protection for different age groups.

Babies:

An infant's skin possesses little melanin, the pigment that gives color to skin, hair and eyes and provides some sun protection. Therefore, babies are especially susceptible to the sun's damaging effects. In fact, babies under 6 months of age should be kept out of the sun. Follow these tips for babies older than 6 months:

Take walks early in the morning or late afternoon and use a stroller with a sun-protective cover.

Teach Good Habits Early On



Make sure babies are covered up with clothes. (Long-sleeved un-bleached cotton clothing is cool and comfortable, while also highly protective). Clothing with an Ultraviolet Protection Factor (UPF) listing on the label offers extra security. UPF is similar to the SPF for sunscreen, and The Skin Cancer Foundation recommends UPFs of 30 or higher for superior protection.

Choose a wide-brimmed hat or bonnet that protects the baby's face, neck, and ears. A baby who wears a hat during the first few months will get used to having it on.

Sunglasses are not very practical for a young baby. To protect your baby's eyes, seek the shade between 10 a.m. and 4 p.m.

Apply a broad-spectrum, SPF 15+ sunscreen to areas left uncovered such as baby's hands.

Shield the baby from direct sunlight coming in through the windows of your car.

Toddlers and School-Age Children:

Protecting toddlers from the sun requires a little more thought and effort. It is important to educate not only your child, but caregivers as well.

Make sure your child seeks the shade between 10 a.m. and 4 p.m. Check the outdoor area where your child plays to make sure there is adequate shade.

A broad-spectrum, SPF 15+

sunscreen should be applied every morning, 30 minutes before leaving the house. Keep sunscreen in the bathroom where children brush their teeth, and eventually it will become routine.

Two tablespoons (one ounce) of sunscreen must be applied every two hours and more often if your child is swimming or sweating.

Children should wear sun-protective clothing whenever possible - including shirts, hats and sunglasses - for protection against ultraviolet radiation. Make sure your child wears a wide-brimmed hat, long-sleeved shirt and pants during prolonged periods in the sun.

Children should enjoy the outdoors safely. Teach them how to protect themselves and tell others about the importance of sun protection.

About The Skin Cancer Foundation:

The first organization in the US committed to educating the public and medical professionals about sun safety, The Skin Cancer Foundation is still the only global organization solely devoted to the prevention, detection and treatment of skin cancer.

The mission of the Foundation is to decrease the incidence of skin cancer through public and professional education and research.

For more information, visit www.skincancer.org.

New Fitness Equipment



Come check us out!

FREE Fitness Consultation and FREE One-Week Pass

Offer valid thru August 15, 2008.



St. Charles YMCA ~ 3900 Shady Springs Lane

636-928-1928

www.ymcastouis.org/stcharles

ATTENTION: Denture Sufferers...

Are You Frustrated By Problem Dentures

Isn't It Time to ELIMINATE

- Embarrassment
- Messy Denture Adhesive
- Gagging and Bulky Plastic
- Feeling Insecure
- Pathological Bone Loss
- Loss of Taste
- Collapsed Bite

Mini-Implant Consultation & X-ray Next 17 Patients Only \$1



Why spend your money on a new set of old-fashioned dentures?

Make Your Denture Problems Go Away in Just One, Short, Comfortable Office Visit, Without Painful Surgery... and at Less Than 1/3 the Cost of Conventional Implants. Have our Mini-Implant System placed in less than 2 hours, then go out and enjoy your favorite lunch. Eat comfortably, have a pleasant conversation, laugh and talk with confidence. *Your denture feels secure and is being held firmly in place...and All This at an Extremely Affordable Price.*

O'Fallon Dental Partnership
Barry Brace, DMD and Associates

General Dentists
636-978-7816
www.drbrace.com

Eating Can Be Wonderful Again...

Implant Dentistry is a non-specialty interest area that requires no specific educational training to advertise this service.

Don't Miss Our Anniversary Celebration

Friday and Saturday
August 22-23
10 a.m. - 3 p.m.
at
Country Club Plaza
St. Charles, MO 63303

For information or directions call
636-940-2226

Free to Everyone!!!

Bounce House (Sat. Only)

Drawings for \$1000 in local gift certificates

Free Facial Sculpting (By Appt. Only)

Kids Games & Prizes

ALSO:

- Hearing Screenings by Beltone (Fri. only)
- Eye Exams from Overland Optical (Fri. only)
- Chair Massages
- Orthotic Foot Scans
- Postural Screenings
- And So Much More!

Sponsored By
Lauer Chiropractic
Serving the St. Charles Community for 15 years

Dr. Esther Lauer D.C. • Dr. Elizabeth Perez D.C.
Elaine Schneider BIC
www.lauerchiropractic.com

Church

Aug. 28: 6:30 p.m. Christian Scouting for Girls Comes to St. Charles

A new American Heritage Girls (AHG) Troop, a faith-based organization will hold registration for girls ages 5-18. Dynamic, Christ-centered scouting program. Girls are enriched physically, mentally and spiritually through community service, camping, more. AHG has troops in 34 states. At New Beginnings Family Church, 3565 Franks Dr., St. Charles.

Sundays: 4:10 p.m. Mercy Road Fellowship

Go ahead - sleep in, enjoy your breakfast, read the paper, play a round of golf. You can take it easy on Sunday morning and still make it to worship at Mercy Road. www.mercy-road.org.

Faith Covenant Church, #1 E. Sutters Mill Rd., St. Peters

As a new church, we desire to know God through His Son Jesus Christ and the Holy Spirit. Come fellowship with us and grow in God together. Call 314-805-6060.

Every Sunday: 11 a.m. Newness of Life Services

Charlotte's Hall, 8709 Riverview Blvd. Phone: 314-524-1168 or visit www.newnessoflifechurch.org.

Events

Aug 23: 8-10 a.m. Pancake Breakfast at Applebee's

Organized by Dr. Teresa Hazelwood and Pam Makarewicz to benefit Susan G. Komen for the Cure and the National Philanthropic Trust Breast Cancer Fund will be hosted by Applebee's at 6170 Mid River's Mall Dr. in St. Peters. Tickets are \$7 for adults and \$5 for children 12 and under. Tickets may be purchased in advance from their office at HealthKare Solutions 3899 Mid Rivers Mall Dr. For more info call 636-936-1441 or visit HealthKareSolutions.com or www.the3day.org.

Aug. 23: 8 a.m.-1 p.m. Tailgate Sale & BBQ

Pallottine Renewal Center, 15270 Old Halls Ferry Rd., Florissant. Selling spaces available for \$15 (deadline Aug. 16). Call Sharon or Ken at 314-837-7100.

Aug. 23: 2-6 p.m. Flood Aid '08

El Shaddai Ranch, 3325 Deer Run Ln., Moscow Mills, MO. Worship bands, Blue Grass, prayer tent, activities for kids, concessions, and more. Sponsored by the Troy Ministerial Alliance. www.floodaid-08.org.

Aug. 23: 7 p.m. Trivia Night

Rebuilding Together hosts 3rd annual trivia night to benefit low-income homeowners. Doors open at 6 p.m., questions at 7 p.m. At Kirkwood Community Center, 111 South Geyer Rd., Kirkwood, MO. \$20 per person, includes beer, soda, snacks. Cash prizes for 1st, 2nd, 3rd place, 50/50s, silent auction. 8-10 per table. More than 200 low-income homeowners a year benefit from volunteers doing home repairs organized by Rebuilding Together - St. Louis, where all labor and materials are provided by St. Louis volunteers and businesses. For tickets contact Laura Hurt at 314-918-9918, x21, orlhurt@rebuildingtogether-stl.org.

Aug. 23: Race for the Rivers & Clean Water Challenge

Day of music, food, hands-on activities & demonstrations in celebration of River Lore - Past & Present. Race for the River: Canoe & Kayak Race covering 60-mile adventure in learning and racing. Clean Water Challenge: 20-mile adventure in learning and racing. Frontier Park, St. Charles. www.racefortherivers.org.

Aug. 26: 3-7 p.m. Blood Drive

St. Charles Borromeo Catholic Church, 534 North 5th, Dyer Memorial Center. Chili and desserts for all giving donors. Bring photo ID, eat before donating, walk-ins welcome. To donate call Barb Bott at 636-947-3939.

Sept. 6: Breakfast/Basement Tailgate Sale

Northside Christian Church, 9635 Lewis & Clark Blvd. (Hwy. 367). Pancake breakfast: 8-10:30 a.m., Basement/Tailgate Sale: 8 a.m.-Noon. Check out all of our new items, even furniture. \$4 for sausage and all-you-can eat pancakes or, sausage-gravy and biscuits plus a beverage. \$10 for a double parking spot to sell your own Treasures. Call Barb at 314-868-1483.

Sept. 8: 2nd Annual Golf Classic

Sponsored by the Hispanic Chamber of Commerce of Metropolitan St. Louis at the Norman K. Probst Community Golf Course in Forest Park. 4-person scramble. 12 p.m. Registration, 1 p.m. Shotgun start, 6 p.m. Dinner, Prize & Flight Awards. \$85 per player includes greens fees, cart, reception & dinner. \$340 per foursome. Dinner guest only \$30. Also looking for sponsors. Contact Steve Martinez at 636-227-7888 or steve.martinez.lxnq@statefarm.com. Learn more about our work at www.hccstl.com & www.hispanicecsfund.org.

Sept. 9: 6-9:30 p.m. Dinner Meeting and Networking - Assoc. of Home-Based Women Entrepreneurs

At Orlando's in Maryland Heights. Mary Kutheis will present "Six Habits of Highly Ineffective People" - practical ideas for getting things done on time. \$25 members, \$35 guests. Advance reservations by Sept. 4, 314-805-9519. www.HBWE.org.

Sept. 14: 2:30-4:30 p.m. & Sept 16: 7-9 p.m. Parents Without Partners Open House/New Membership

Between ages of 18 - 100? PWP St. Charles County Chapter invites you to an Open House. Sunday's location is Old Town Pavilion B, 1st Park St., St. Peters. Tuesday's location is St. Peters City Hall, Meeting Room C, One St. Peters Centre Blvd. www.parentswithoutpartners.org or 636-294-1217.

Sept. 27: 10 a.m.-4 p.m. Frisella Nursery Fall Festival Fund-raiser for Charity

Help us help others and have fun! Inflatable bouncer, face-painting, live music, hand-thrown pottery demo and more. Food and beverages available for purchase. Proceeds to Emmaus Home in Marthasville and Our Lady's Inn in St. Charles. 636-798-2555.

Vendors Wanted for Christmas Bazaar

Florissant Elks Ladies Auxiliary Christmas Bazaar on Nov. 15. Contact Darlene Evoy at 314-831-8934.

Third Wed. of Month: 5-7:30 p.m. St. Charles Music on Main

Includes food, drink & live music. Downtown Historic District, 100 & 200 blocks of North Main St. in St. Charles. Bring lawn chairs. Free.

8/20 - *Serapis*
9/17 - *The Arbogast Band*

Fourth Fri. of Month: 8 p.m. Friday Night Flicks

In Frenchtown area of St. Charles. Sponsored by Arts & Culture Commission. Includes music, food, refreshments, and G, PG, and PG-13 rated movies. 1800 North Second St. in St. Charles. Bring lawn chairs. Free.

8/22 - *Best in Show - Bring Your Dog* (PG-13)

Fourth Sat. of Month: 7-11 p.m. Hot Summer Nights Festivities on Main St. in St. Charles

Includes food, drink and live music. Sponsored by Krey Distributing. Browse Shops and enjoy restaurants and eateries on Main St.

8/23 - *The Sliders*

Wednesdays at Noon & Saturdays at 2 p.m.: Gallery Talks for Adults, Missouri History Museum

Forest Park at Lindell & DeBaliviere. 314-454-3101. Free event. www.mohistory.org.

Every Fri.: 11 a.m. - 2 p.m. & 5-8 p.m. American Legion Creve Coeur Post 397 Fish Fry

Fish & grill items for sale. Also daily lunch specials Mon-Thurs from 11 a.m. - 2 p.m. Creve Coeur American Legion Post 397 at 934 rue de la Banque Dr. Call 314-872-3186.

CITY OF FLORISSANT Florissant Parks & Recreation Department Programs. Call 314-921-4466 for information.

2nd & 4th Tuesdays: 11 a.m.-12:30 p.m. Play Days

\$1 resident, \$2 non-resident, per day. Parents, come with your child for a morning of play. Lots of toys, balls, music, mats and many fun things to play with. This is not a structured activity, but a chance to get out and have fun with your child and other children.

CITY OF HAZELWOOD PARKS AND RECREATION

Aug. 23: 6-10 p.m. Bluau
Free summer celebration for all ages at Howdershell Park. Hawaiian dance troupe and music by the Baker-McCaren Band.

McDaniel Insurance Agency
OUR GIFT TO YOU
FOR GIVING US THE OPPORTUNITY TO SAVE YOU \$\$\$\$
For every policy you allow us to quote, we will give you a FREE gas card...
AUTO=\$10.00
AUTO & HOME=\$20.00
AUTO, HOME & LIFE=\$30.00
AUTO, HOME, LIFE & BUSINESS=\$50.00
Global Green
We only ask for 30 minutes of your time and a copy of your current policies. An Independent Franchise
Email: mcdaniel@globalgreeninsuranceonline.com
1106 Wolfrum Road • St. Charles, MO 63304 • 636-477-0088

Are your money worries sending you downhill?
CALL US NOW!
Start Going Up Hill
SUN LOAN COMPANY AND TAX SERVICE
Loans from \$100 - \$1400
+ Free copying + 30-minute to 1-hour processing
+ Free faxing + Help rebuild & establish credit
9000 St. Charles Rock Rd. • St. Louis
314-427-1116 www.sunloan.com

Disney ON ICE
PRODUCED BY FELD ENTERTAINMENT
DISNEYLAND ADVENTURE
SEPT. 4 - 7
Tickets \$15
THE FAMILY ARENA
Buy tickets at www.disneyonice.com
Metroix outlets, The Family Arena Box Office or call (314) 534-1111
For information call (636) 896-4200
TICKET PRICES: \$15 - \$40 VIP - \$60 Front Row
Limited number of Front Row and VIP seats available. Call for details.
(Service charges, facility and handling fees may apply)

| Thu. | Fri. | Sat. | Sun. |
|---------|---------|--------------------------------|---------|
| SEPT. 4 | SEPT. 5 | SEPT. 6 | SEPT. 7 |
| 7:00 PM | 7:00 PM | 11:30 AM
3:30 PM
7:00 PM | 1:00 PM |

BBQ, soda, beer and Blauaus will be available for purchase. No outside alcohol allowed. 314-839-5575 or TDD 1-711.

Thursdays, Aug. 28 - Dec. 4: 6:30-7:30 p.m. Karate Kids Instruction

14-week program for ages 7-12. \$26 residents, \$34 non-residents. Taught by USKA certified Black Belt instructors. Hazelwood Community Center, 1186 Teson Rd. 314-731-0980 or TDD 1-711.

Thursdays, Aug. 28 - Dec. 4: 7:30-9 p.m. Adult Karate Instruction

14-week program for adults. \$34 residents, \$44 non-residents. Taught by USKA certified Black Belt instructors. Hazelwood Community Center, 1186 Teson Rd. 314-731-0980 or TDD 1-711.

Harvestfest Plan Underway

Hazelwood Parks and Recreation is currently planning the 2008 Hazelwood Harvestfest, a one-day family festival held in Howdershell Park on Saturday, September 13. The event will feature free family entertainment, activities for all ages and the Miss Hazelwood Coronation. Applications are currently being accepted for parade participation, Miss Hazelwood contestants, information booths, craft vendors and not-for-profit food and game booths. For detailed info call 314-731-0980 or TDD 1-711.

Saturdays, Sept. 6 - Oct. 11: 10:30 a.m. - 12 p.m. Ramp Camp

At Hazelwood Skate Park for all ages to learn BMX and skateboarding skills and tricks. Riders must have release waiver on file. \$20 residents, \$25 non-residents, includes daily pass for days of camp. 314-731-0980 or TDD 1-711.

Preschool Programs in Hazelwood (For ages 2-5)

Playtime - ages 2-3½, Mondays, 9/8-10/20, 9-11 a.m. Concentrates on social skills.
Tiny Tots - Kinder readiness, Tuesdays/Thursdays, starts after Labor Day. Structured activities, field trips, music, crafts.
Alphabet Adventures - ages 3½-5, Mondays, 9/8-10/20. Concentrates on learning alphabet through games, crafts, stories.
Pint Sized Publishers - ages 3½-5, Mondays, 11/3-12/15. Turn childrens' stories into books they illustrate.
 Information for all programs: 314-731-0980 or TDD 1-711.

ST. CHARLES COUNTY PARKS PROGRAMS

Aug. 20: 8:30 a.m. Trail Trekkers at Quail Ridge Park, Shelter #3

Make the trek to Quail Ridge Park on the third Wednesday of

each month to join Park Rangers and fellow walkers for a safe, leisurely stroll along the park's paved or natural trails. Free!

Aug. 27: 6:30 p.m. Guided Mountain Bike Ride at Bangert Island - Meet on Katy Trail at Fontier Park

Seasoned riders and beginners alike will enjoy a relaxing ride along the park's natural trails. Participants provide own bicycle and helmet. Individuals from Gateway Off-Road Cyclists and Momentum Cycles will provide on-site safety checks and quick tune-ups during the rides. Free!

Aug. 27 - Oct. 15, Wednesdays: 6:30-7:30 p.m. "Basic" Dog Obedience at Quail Ridge Park, Off-Leash Dog Area

Our experienced dog handler will train your furry friend to be the best on the block. 8-week session (will not meet Labor Day weekend) emphasizes basic problem-solving skills and positive motivation. Open to all dogs over 4 months of age. Advanced registration is required, and the class is limited to 12 dogs. \$110 per dog

Health and Meetings

Aug. 22: 1-3 p.m. Hawaiian Open House

Join us for a luau and enjoy entertainment, refreshments, door prizes and tours. Village North Retirement Community, off Dunn Road just west of Christian Hospital and the 1-270/Hwy. 367 interchange. Free. Call 314-747-WELL to get discussion topics and to register.

Every Monday: 7-8:30 p.m. North County Co-Dependents Anonymous

Meets at the Zion Lutheran Church, 123 Carson Rd., Ferguson, MO. Contact Roberta at 314-302-8914 for more information.

Every Tuesday: 9-10:30 a.m. TOPS Meetings

Take Off Pounds Sensibly by meeting at the Florissant Presbyterian Church, 660 Charbonier Rd., Florissant. Call 314-522-0959 for information.

First Thursday of Month: Parents Without Partners, North County Chapter

General Meeting, 2435 Creve Coeur Mill Rd., 7 p.m., Phone: 314-739-0880.

Every Sunday: 6:30 p.m. Survivors of Incest Anonymous Meetings

Women only. Holy Communion Episcopal Church, 7601 Delmar, University City. Call 314-993-5421 or 636-561-1407.

Christian Hospital Mental Health Evaluations

Psychiatric and chemical dependency evaluations are confidential and offered free by the Christian Hospital Center for Mental Health. Christian Hospital has a geriatric psychiatric unit dedicated to serving the mental health needs of geriatric patients. Call 314-839-3171.

Free Lung Function Screenings

Christian Hospital Breathing Center offers free lung function screenings. Northwest Health-Care, 1225 Graham Rd. Call 314-953-6040.

Outdoors

Katy Trail

For information about the Katy Trail, call the Department of Natural Resources toll free at 1-800-334-6946 (voice) or 1-800-379-2419 (TDD) or e-mail.

St. Louis Zoo

WildSide Walkers

Tuesdays and Saturdays year round between 7 and 8:30 a.m.

Learning and Volunteering

Aug. 22: 6:30-8:30 p.m. Volunteer Training for Therapeutic Horseback Riding Program

Jamestown New Horizons is a not-for-profit agency for children with disabilities. Volunteers must be 16 or older, and will be taught how to serve as horse leaders and side-walkers to ensure the safety of riders, ages 2-teens with physical and intellectual disabilities. Free training, no experience necessary. 15350 Old Jamestown Rd., east of Florissant. Fall session begins Sep. 2. www.jnh-gon-riding.org or 314-741-5816.

Mon. & Thurs. beginning Sept. 8: 7-9 p.m. Square Dance Lessons

First United Methodist Church, 801 First Capitol Dr., St. Charles. George Dunbar is instructor.

636-978-5222 sponsored by St. Peters Squares.

Thurs. beginning Sept. 11: 7:15-9 p.m. Square Dance Lessons

Florissant Valley Christian Church, 1325 N. Hwy. 67 (Lindbergh), Florissant, MO. Stan Mangogna is instructor. Sponsored by Missouri Promenaders Square Dance Club. Register at 314-839-2134, Jerry and Joyce Chancey.

Thurs, beginning Sept. 25: 7-9 p.m. Square Dance Classes

Church of the Good Shepherd, 1601 Woodstone Dr., St. Peters, MO. Free fun dance starting at 6:30 p.m. Sponsored by Wheelers & Dealers Square Dance Club, Mike Dorns, instructor.

Call Joan Howard, 636-922-3669.

First Sat. of the Month: 1-4 p.m. Newborns in Need, All the Babies of Eastern MO Volunteers

Meet at Autumn View Gardens, 11210 Schuetz Rd., St. Louis, MO. We knit, crochet, sew, and quilt essential items for premature babies and babies in need. Handicap accessible. Visit www.newbornsinneed.org and www.newbornsinneed.org/easternmo to learn more. Call Clementine Roeder at 314-395-7582 or Judy Giovanoni at 636-227-0247.



Call Julie
Classified Sales Representative

636-379-1775



Call Brooke
Classified Sales Representative

636-697-2414

mycnews.com



ACTIVE BUYER

CASH PAID for... books, records, old magazines, postcards, costume jewelry, old photos, toys, dolls, old foreign coins.
314.432.7994 or 1.800.792.9053

FOR SALE

'77 FORD F250: 99,000 miles (original), In-line 6-cyl engine, 4-speed manual, A/C, CD player/stereo, Toolbox. Runs good! Will out-pull a Dodge Cummins.
\$2,000.
636-462-7773

FOR SALE

SHOTGUNS
1900s, 12 gauge S/S, 10 gauge h r, 410 Wyco. Many newer guns.
314-741-9237

HELP WANTED

Help Wanted
Earn \$1000-\$3200 Monthly to drive brand new cars with ads.
www.AdCarJobs.com

HELP WANTED

1978 ~ 14x70 Mobile Home with 2 br, 2 ba. New furnace and A/C in '07. Rolling Meadows Park, O'Fallon, MO 63366.
Pad Rent \$254 per month. \$5000
636-561-6109

HELP WANTED

CNA/HHA Companion Needed
Serving North County and St. Charles. Flexible Hours, FT/PT. Call for immediate interview. **Must have valid drivers license and proof of insurance.**
314-895-1800
9 a.m. - 3 p.m. M-F

BUSINESS OPP.

JOIN EXPLOSIVE NATIONAL EXPANSION TEAM
In Telecommunications
• Inc. 500 Company • Work-From-Home
• 800% Growth • Flexible Hours
• 6 Figure \$ Potential • Earn While You
1-800-659-7706

2000 GMC Safari
white chariot conversion mini-van. Excellent Condition. 88,xxx miles. V-6, Satellite Radio, Dealer Maintained. \$8000.
Call 314-280-1041.

Great Restoration Project!
'67 Ford Mustang Ford 400 V8, \$500 firm Troy area - 636-462-7773

ALGONQUIN
NURSES P.R.N.
Quality Assurance Coordinator Home Healthcare Agency needs someone with excellent customer service skills, professional appearance and Medicaid experience to maintain files in accordance with state regulations. Interested applicants should contact 636-978-1775.
Please send resume to: 211 East Elm St., #1, O'Fallon, MO 63366

In-Home Care
for your loved one
• Caring Companionship • Bathing & Dressing • Walking Assistance • Meal Preparation & Cleanup • Light Housekeeping
• Transportation • Medication Reminders • Alzheimer's & Dementia Care • Up to 24 hour Care
Senior Helpers
Caring In-Home Companions
800-000-0000
www.seniorhelpers.com

CLEANING
Join our TEAM!! Growing company wants dependable part-time TEAM MEMBERS. GOOD PAY.
MTClean
MTO Clean
940 Bent Oak Ct., Lake St. Louis
636.980.6243

CAREGIVERS

CAREGIVERS NEEDED
A fast-growing, non-medical in-home care agency is seeking mature, dependable people to fill open positions caring for elderly. If you would enjoy providing companionship, preparing meals and shopping for our friendly elderly clients, then we want to hear from you. Flexible hours available. Part-time/Full-time, Live-in & per diem. Call (636) 462-8383 for details.



Truck for Sale * REDUCED
1997 GMC Jimmy V6 4.3L Vortec AC PS PB PW PDL. Leather seats, recent tune up. New fuel pump (\$800). Tow Pkg. Good tires, runs well. Good condition. 108,000 miles. No trades. REDUCED to \$3,600!
Call 636-462-7773

PRICED TO MOVE
'30 Elkhorn extended cab over camper for short-bed pick-up. Loaded, excellent condition \$10,000 obo.
636-240-0451

F-150 Tonneau Cover
Black A.R.E. (fiberglass) short bed tonneau cover in excellent condition. Comes with lock and hydrolic lifts. Retail (new) is \$1500... \$500 obo
636-358-3971

SHIFT MANAGERS
ST. CHARLES COUNTY AREA
Must be at least 18 years old

Salary:
\$27,500 to \$32,500
\$500 Sign-on Bonus!
* after 90 days employment

Openings in St. Charles County

You should have a stable work record and the ability to work with the public. Tremendous opportunity for advancement. No degree required.

APPLY ONLINE NOW!
www.cfmsite.com
or call
1-800-689-8156

Convenient Food Mart

COMPREHENSIVE BENEFITS INCLUDING:

- Medical Ins.
- Tuition Asst.
- Retirement Plan
- Dental Ins.
- Promotion Within
- Paid Training
- Paid Vacation
- Holiday Pay
- Monthly Bonus
- EOE/Drug Free

Kitchen Assistant
Lake Saint Louis
Dependable, energetic cook at new private elementary school in Lake St. Louis. FT/Year round, \$11/hour, plus benefits. Starts late August. Mon-Fri, 7 am-3 p.m. Exp. preparing food for large groups. Involves lifting, cleaning and interaction with children. Must have references and reliable transportation. Background check, fingerprinting and pre-employment drug testing required. Apply in person at Andrews Academy, 25 Lakeside Dr., Lake St. Louis, MO 63367.

SUBWAY

RESTAURANT
Chesterfield Valley
PT/FT Days only.

Apply in person at our location near Lowe's.
314-795-8412

NEEDED IMMEDIATELY
Cooks ~ Dietary Aides ~ Hospitality Aides
ALL SHIFTS
The Villages of St. Peters, a prestigious long-term care facility located in St. Peters, MO is currently seeking highly motivated individuals for the above positions.
Responsibilities for these positions are as follows:
Cook: Prepare food in accordance w/standard menus and specifications, facility procedures and prescribed dietary/sanitary regulations.
Dietary Aide: Provide assistance in delivery of dietary services. May prepare and/or serve food items, set up tables & trays, serving residents, perform general cleaning tasks, etc.
Hospitality Aide: Provide indirect resident-care services which contribute to residents' well-being.
Requirements: • Prior exp. in food service is preferred, not required. • Functionally literacy in English req. • Effective communication & interpersonal skills necessary.
We have competitive wages and great benefits programs EOE.
Please fax resume to: 972-899-4805 or e-mail to jobs@stonegateseniorcare.com

DENTAL ASSIST

DENTAL ASSISTANT:
No experience? We can refer you to a 10-week program taught in an actual dentist office for training in this exciting field.
Begin your new career in this rewarding profession!
• Positions also available for experienced dental assistants.
Call
Dental Assisting of West County
314-578-4781

Fire & Rescue Thomas the Train Display Table & Trains. Table is type used by retail stores. All destinations & track are tacked down, do not move. Engines & Cars included (Harold, Thomas, Edward, Percy, Bertie, Bulgy, George, Ben, Terrance, Fire Truck, Fire Train, Sodar Ambulance & 2 Milk Cars. Destinations included (Sodar Engine Walsh, Sodar Fire Dept., Emergency Hospital, Water Station, Knapford Covered Bridge, Draw Bridge, 2 Bridges & Milk Farm destination). Table sits on homemade board to look similar to original Thomas Table, blue w/bricks to look like tunnel. Good condition. \$300.
636-949-0670.

DRIVERS

BEST IN CLASS
Drivers- A higher quality of life is here!
Up to \$1000 per week. Superior insurance pkg! Majority Drop n Hook. Zero Down Lease. Purchase also avail. Also hiring Owner/Operators!
800-506-9721
www.lkam.com

DRIVERS:
Top Pay + Bonuses!
Excellent Benefits!
CDL-A 1 yr T/T Exp.
Blue Line FoodService. EOE
Call: 708-862-1513, x 14
or Fax: 708-862-1897

FOR RENT

Separating, Divorced, Divorcing?
Furnished 2 bed, 2 bath Condo
6 month lease
Available Immediately.
314-965-6974

"Outstanding service tells the customer that they are important."
- Shannon, Manager

Outstanding Customer Service starts with Outstanding People.

We're looking for friendly people with a knack for conversation, a passion for customer service and the flexibility to work weekends. All employees are eligible for semi-annual increases and paid training. We offer tuition reimbursement, competitive weekly pay, 401(k) with company match and medical and dental benefits. Enjoy business casual dress with your 20% Macy's discount.

NOW HIRING:
Full Time • Part Time • Seasonal
Customer Service Representatives
Sales Agents

Apply online at **macysCallCenterJOBS.com**

Simply go to our website and complete the online job profile. Macy's Credit and Customer Services is located at 111 Boulder Industrial Drive in St. Louis. (In Earth City near I-70, I-270, and 370). For more information call (314) 738-5258.

Eres Bilingue?
Ven y crece con Nosotros!

Equal opportunity for all. © Macy's Credit and Customer Services, 2008

Central Kitchen
Now Hiring

Our Central Kitchen is conveniently located in Earth City at I-270 & St. Charles Rock Road. We are looking for quality-conscious Associates to help us achieve our goals in the area of Food Production.

Full-time Central Kitchen Shifts:
7 a.m. - 3:30 p.m. and 11 a.m. - 7:30 p.m.
Positions open in the areas of Packaging, Sanitation, Shipping, etc.

We Offer:

- Stable company with growth opportunities
- Excellent benefits after qualifying period
- Scheduled pay increases
- Friendly environment
- Set Hours
- Off by 8 p.m.
- Closed Sunday and Holidays

Food handling or production experience preferred.

If you are interested in this opportunity, please apply on-line at **www.dierbergs.com**.
For more information, you may contact our Hotline number at 636-532-8755.

EEO M/F/D



Call Julie
Classified Sales Representative

636-379-1775



Call Brooke
Classified Sales Representative

636-697-2414

mycnews.com



View our Classifieds online: www.mycnews.com

The Penny Saver



\$500 or less ~ 3 lines for \$5

WHEELCHAIR
Nice, clean ~ \$95
314-741-9237

SCOOTER ~ Small, compact,
easy to load. \$195
314-741-9237

Invacare Electric Wheelchair
New batteries, 7 years old. \$495
314-741-9237

Call Now to place Your Ad!
636-379-1775

HELP WANTED

WAREHOUSE
Order Picker, UPS Shipper
Lift 70 lbs., FT, Mon-Fri.
Apply 10-3
DiscountCoffee.com
501 N. Service Rd. • St. Peters, MO 63376
FAX 636-278-1927

DAYS INN
Now Hiring Experienced
Housekeeper.
PT/FT. Must Be available
for any shift.
Apply in Person
9 a.m. - 3 p.m.
2781 Veterans Memorial
Parkway
St. Charles, MO 63303

JANITORIAL

Discount Health Care Programs
Savings Up To 80%
for
Dentists * Vision * Medical
www.everyonebenefits.com/GaryB

OFFICE CLEANING SPECIALISTS
Seeking Floor Care Professionals
FULL-TIME / PART-TIME
DAYS OR EVENINGS
O'Fallon, St. Charles & Chesterfield.
Call: 1-888-645-1505
JANITRON
5229 Manchester, St. Louis, MO 63110
Fax: 314-645-6871
email: quickresponse@janitron.com
Clean police record required.

NOVENA

PRAYER TO ST. JUDE

May the Sacred Heart of Jesus be adored, glorified, loved and preserved throughout the world, now and forever. Sacred Heart of Jesus, Pray for us. St. Jude, Worker of Miracles, Pray for us. St. Jude, Helper of the Hopeless, Pray for us.

Say this prayer 9 times a day for 9 days, then publish. Your prayers will be answered. It has never been known to fail.

Thank you, St. Jude. S.F.

SERVICES

PET CEMETERY
over 2,500 pet burials;
over 6 acres; over 40
yrs old. 314-576-3030
www.memoryparkpetcemetery.info

SPECIAL EVENTS

OLD POSTCARD SHOW
Friday, Aug. 29 ~ 10 am - 6 pm
Saturday, Aug. 30 ~ 9 am - 4 pm
VFW Hall, Hwy 159, Collinsville, IL
FREE ADMISSION!
618-531-4189

Missouri Press Service STATEWIDE CLASSIFIEDS \$300 Buys 200 Missouri Newspapers OVER 1,039,947 CIRCULATION

AUTOMOBILES

Hondas from \$500! Buy Police Impounds! Cars/Trucks/SUVs from \$500! For Listings 800-399-5080 ext. A140

BUSINESS OPPORTUNITIES

ABSOLUTELY RECESSION PROOF! Do you earn \$800 in a day? Your own local candy route. Includes 30 Machines and Candy. All for \$9,995. 1-888-776-3067.

COMPUTERS

A NEW COMPUTER NOW!!! Brand Name laptops & desktops. Bad or NO Credit - No Problem. Smallest weekly payment available. It's yours NOW - Call 1-800-839-3789

EVENTS

Gun Show! August 23-24. Sat. 9-5, Sun. 9-4. Kansas City, MO. 3 Trails Expo Center (8844 Hillcrest Rd) Exit 87th St. Off I-435. Buy-Sell-Trade. Info: (563) 927-8176.

FARM

IH 3688 CAH \$16,500.00; Ford 4000, \$5,750.00. Call 573-819-6936

FOR RENT

A Bank Repo for Sale! 4 BR \$21,300! Only \$225/mo! 3 BR \$14,900! Only \$199/mo! 5% down 20 years @ 8% apr. For Listings 1-800-560-0678 x G999

3 Bed 2 Bath only \$213/mo! (5% dn, 20 yrs @ 8.5% APR!) Buy Foreclosure! For Listings 800-604-8363 ext. 1294

FOR SALE

AAA POOLS! Enjoy a Huge 31'x19' Pool w/sundeck, fence, filter, ladders only \$799! 100% Financing! w.a.c. (installation extra). Homeowners! Call Us Today! 3-Day Installation! 1-800-852-7946 limited area.

HELP WANTED

"Home-based" Internet business. Flexible hours. Earn \$500 - \$1000/month PT, \$2000 - \$5000+ FT. Start while keeping your current job. Free details. www.K487.com

MISSOURI STATEWIDE CLASSIFIEDS GET RESULTS

HELP WANTED

General Assignment Reporter, local government emphasis. Seeking applicants with journalism degree, photography, Photoshop skills, team player who enjoys small town, small office environment. Page pagination using Quark, video photography and editing helpful. Opportunity for advancement. Benefits. Send resume, clips: Editor, Marshall Democrat-News, PO Box 100, Marshall, MO 65340, marshalleditor@socket.net

ABLE TO Travel: Hiring eight people, no experience necessary, transportation & lodging furnished, expense paid training. Work/Travel entire U.S. Start immediately. www.protekchemical.com. Call 1-877-936-7468.

HEAVY EQUIPMENT TRAINING. Cranes-Dozers-Loaders. Huge Job Demand. National Certification. Licensed by OBPVS. Oklahoma College of Construction, 280 Quadrom, OKC, OK. www.Heavy9.com 1-888-798-0710

HELP WANTED-DRIVERS

LTI Trucking Services, Madison, IL Needs Company Drivers, Owner/Operators and Small Fleet Owner/Operators. Mid-west runs, HOME WEEKENDS! Good Pay, Benefits. Requirements: Class "A" CDL/2 years experience. 800-338-8965 ext 7752.

THE ONLY CALL YOU NEED TO MAKE! OTR Drivers wanted. Prepass EZPass. Every 60K miles raises. 2006 newer equipment. APU Equipped. Passenger/Pet Policy. 100% No touch. Butler Transport. 1-800-528-7825

WANT HOME WEEKLY WITH MORE PAY? Run Heartland's Midwest Regional! \$.45/mile company drivers \$1.51 for Operators! 12 months OTR required. HEARTLAND EXPRESS 1-800-441-4953 www.heartlandexpress.com

CI Truck Driver Training. #1 CDL School in MO. 3 Week Training Program. State Approved. 1-877-626-5455.

DRIVERS: \$1000+ WEEKLY. Sign-On Bonus. 35-41 cpm. Earn over \$1000 weekly! Excellent Benefits, Need CDL-A and 3 mos. recent OTR. 800-635-8669

Driver - \$5K Sign-On Bonus for Experienced Teams: Dry Van & Temp Control. Solo Lanes also available. O/Os & CDL-A Grads welcome. Call Covenant (866) 684-2519. EOE.

HELP WANTED-DRIVERS

DRIVERS-CDL-TRAINING. Company Drivers - Sign on for Exp! Students Grads Welcome, or NO CDL? We can help! American Eagle Lines. Call Guy@800-387-1011 www.aedrivers.com

Driver - KNIGHT TRANSPORTATION - Is a nationwide company with a hometown feel. We take care of our drivers needs because we know you are taking care of us. If you are interested in a future with KNIGHT give us a call! 888-562-7783 or apply online www.knighttrans.com 4 mos. OTR/CDL-A Required.

Teton Transportation, Inc. The company with the Best Driver wins! Hiring COMPANY Drivers/Owner Operators (CDL A/w 6 mos. exp.) Call for details 888-295-1019 or 800-956-3846 ext. 179 www.drive4teton.com

INSTRUCTION/TRAINING

MISSOURI WELDING INSTITUTE, INC. Nevada, Missouri. Become a Certified Pipe and Structural Welder. Earn top pay in 18 weeks. Many companies seek our graduates. 1-800-667-5885.

MISCELLANEOUS

ATTEND COLLEGE ONLINE from Home. *Medical, *Business, *Paralegal, *Computers, *Criminal Justice. Job placement assistance. Computer available. Financial aid if qualified. Call 866-858-2121. www.CenturaOnline.com

NOTICES

DIVORCE without Children \$95.00, **DIVORCE** with Children \$95.00. With FREE name change documents (wife only) and marital settlement agreement. Fast, easy and professional. Call 1-888-789-0198.

PET SUPPLIES

All New HAPPY JACK (R) KENNEL DIP II controls fleas, ticks, stable flies, mosquitoes and mange on dogs. Biodegradable. Concentrated. At farm, feed & hardware stores. www.happyjackinc.com

REAL ESTATE

Homes from \$10,000! Buy Foreclosures & More! 1-4 Bedrooms! For Listings 800-604-8363 ext. 1286

REAL ESTATE



Place your photo business card ad at half price, and place additional listing ads for only \$54, including color!

Lease With Option at Heritage Pointe

Heritage Parkway, Wentzville, MO



Brick and Stone fronts, spacious, shopping

New Construction
Build Equity Faster Than Owning

www.HunekeHomes.com
636-447-7797

Civil War Breaks Out in Jerseyville

Jerseyville, IL – History comes to life again at the annual Jersey County Victorian Festival to be held daily from 7

a.m. to 5 p.m. Labor Day weekend – August 30, 31 and September 1, 2008. Recognized as one of the “Top 100 Events for 2008” by the American Bus Association, this is a wonderful family event setting history in motion through Civil War re-enactments, working artisans and period demonstrations. The festival takes place on the grounds of the Fulkerson Mansion at 25007 U.S. Highway 67 in Jerseyville, Illinois.

One of the many highlights of the festival is the Civil War re-enactments, setting history into motion. At 12:30 p.m. daily, an educational narrative is given by President and Mrs. Lincoln of the events leading up to the Civil War and the Battle at Gettysburg followed by the President’s “Gettysburg Address.” Over 250 re-enactors participate in a very realistic battle held daily that includes cavalry, artillery and infantry.

Encampments on the grounds and agricultural demonstrations further take visitors back in time, allowing them to come closer to the past. Visitors can

visit with President and Mrs. Lincoln, tour Confederate and Union camps, talk with re-enactors and view how meals are prepared over an open fire. A Civil War era style show will be presented as visitors learn about detachable sleeves, daytime and evening dress and what is proper and what is not. Embalming demonstrations will be held in the morning and afternoon by Jon Austin, Executive Director, Museum of Funeral Customs, and are given to enhance an understanding of ritual practices during the Civil War, grief and mourning during and after the death process.

The Duel of Honor between two civilian gentlemen following the historically correct 1777 Code Duello Rules of Dueling will take place daily after insults are exchanged between the gentlemen. Stagecoach and surrey rides and picking up freshly plowed potatoes are favorites of the children, as well as the Stagecoach Robbery by the James Gang that takes place at noon each day of the Festival.

Other festival activities will include: arts, crafts and working artisans demonstrating wood-carving, gunsmithing, spinning of wool, pottery, musical and rhythm instruments of the period and blacksmithing. A Great Wheel will provide the power for a lathe in the blacksmith area where a variety of blacksmith items will be available to purchase. Many other antiques, crafts, collectibles and unique items will be available for visitors to view and purchase. Civil War Sutlers will have a variety of items for sale as well including Civil War era clothing, tin-

Enjoy a Mighty Monarch Fiesta at the Sophia M. Sachs Butterfly House

(ST. LOUIS): Mexican art, mariachi music, and migrating monarchs combine for a festive outdoor evening at the Sophia M. Sachs Butterfly House in Faust Park. Enjoy a Mighty Monarch Fiesta on Saturday, Sept. 13 from 6 to 10 p.m. Individual tickets start at \$150, with many ticket and sponsorship opportunities available. The evening will benefit educational programs, exhibits and partnerships of the Butterfly House, a division of the Missouri Botanical Garden.

The music of Mariachi Los Compadres will entertain as you sip cocktails, sample tastes of Mexico, and mingle in the Butterfly Garden. View original works and paintings from artists of the Belas Artes Multicultural Center. Savor dessert as dancers and storytellers from the Hispanic Heritage Dance Group perform. Bid farewell to monarch butterflies with the tale of their annual autumnal migration to Central Mexico.

Proceeds from the Mighty Monarch Fiesta will provide support for educational programs and future exhibits at the Butterfly House. They will also support the institution’s ongoing partnership with El Bosque Nuevo, a butterfly farm in Costa Rica that helps preserve key areas of tropical rainforest.

Individual tickets are \$150. Upgraded “Social Butterfly” tickets for \$250 include four admission passes to the Butterfly House and individual name recognition in the event program. Additional sponsorship opportunities are also available.

Casual fiesta attire is recommended for the informal evening. Valet parking is available.

For more information or to purchase tickets, please call 314-577-5120 or e-mail liz.papagianis@mobot.org, or visit www.mobot.org/membership.

The Mighty Monarch Fiesta is sponsored in part by Novus International, Inc.



In-Home Care
for your Loved One

- Caring Companionship
- Bathing & Dressing
- Walking Assistance
- Meal Preparation & Cleanup
- Light housekeeping
- Transferring
- Medication Reminders
- Alzheimer's & Dementia Care
- Up to 24-hour Care

Senior Helpers
Caring In-Home Companions

636-925-0008
www.seniorhelpers.com



PC PLAN-IT
Computer Company

We are Your Laptop Center!

Advanced Data Recovery Available

We Buy Broken Laptops

We have over 40 LAPTOPS IN THE SHOWROOM STARTING AT \$150.

Come by and visit us at our recently expanded showroom!

Don't just buy a computer, PLAN-IT!

258 Ft. Zumwalt Square • O'Fallon, MO 63366 • 636.272.3373 • www.pcplan-it.com

types, camp supplies and more. New this year will be an Antique Sidewalk Sale in Downtown Jerseyville all three days of the festival from 10 a.m. – 7 p.m.

Fulkerson Mansion will be open for tours for the first time and will feature outstanding antique kitchen pieces. The Col. Wm. H. Fulkerson Farmstead is listed on the National Register

of Historic Places. The Jersey County Victorian Festival is held one mile North of Jerseyville on Route 67 at the Historic Hazel Dell Farm. Adults: \$7; Children: \$2; under 6 Free. Grounds open at 7 a.m. – 5 p.m. daily. For more information, please call 618-498-5590, email hazeldell@gtec.com or visit www.greatriver-road.com.



JUST 10 MINUTES FROM CHESTERFIELD VALLEY & MID-RIVERS MALL!

Choose from! **LOU FUSZ CHRYSLER • JEEP • DODGE**

400 NEW VEHICLES IN STOCK • 200 PREOWNED VEHICLES IN STOCK

SHOP 'TIL YOU DRIVE

Get **0% FOR 72 MONTHS** on Select New & In-Stock Vehicles

2008 DODGE RAM 1500 SLT QUAD CAB 4x4 21 MPG
MSRP \$35,175 **40% OFF!** \$21,175

2008 DODGE CHARGER^s & 2008 CHRYSLER 300LKⁱ 31 MPG
MSRP \$27,245 **18% OFF!** \$22,245

2008 DODGE GRAND CARAVAN SXT & 2008 CHRYSLER TOWN & COUNTRY 29 MPG
MSRP \$28,500 **25% OFF!** \$21,500

2008 DODGE AVENGER SE^s & 2008 CHRYSLER SEBRING LXⁱ 36 MPG
MSRP \$20,330 **15% OFF!** \$17,330

2008 DODGE NITRO SXT & 2008 JEEP LIBERTY 4x4 25 MPG
MSRP \$26,015 **20% OFF!** \$20,515

2009 DODGE JOURNEY SXT & 2008 JEEP PATRIOT 4x4 30 MPG
MSRP \$23,750 **15% OFF!** \$20,250

3480 HWY K • O'FALLON, MO • 1-800-819-5986 OR View Our Inventory Online at www.loufuszchryslerjeepdodge.com

ALL PRICES FOR THE TITLE AND LICENSE AND WITH APPROVED CREDIT. PRICES INCLUDE ALL APPLICABLE FEES AND INSURANCE AND ARE VALID ON IN-STOCK UNITS ONLY. OFFER EXPIRES 8/31/08. CHRYSLER AND JEEP ARE REGISTERED TRADEMARKS OF CHRYSLER LLC. *10% FOR 72 MONTHS AVAILABLE WITH APPROVED CREDIT ON NEW IN-STOCK 2008 CHRYSLER AVENGER, DODGE BORNADO, DODGE RAM 1500 QUAD AND NEW CAR TRUCKS, JEEP COMPASSER AND GRAND CHEROKEE MODELS THROUGH 8/31/08. **\$1,000 PER \$1,000 FINANCED. SEE DEALER FOR COMPLETE DETAILS. (1) RAM: 40% DISCOUNT OFF MSRP BASED ON MSRP OF \$35,175. (2) CHARGER: 18% DISCOUNT OFF MSRP BASED ON MSRP OF \$27,245. (3) GRAND CARAVAN AND TOWN & COUNTRY: 25% DISCOUNT OFF MSRP BASED ON MSRP OF \$28,500. (4) AVENGER: 15% DISCOUNT OFF MSRP BASED ON MSRP OF \$20,330. (5) SEBRING LX: 15% DISCOUNT OFF MSRP BASED ON MSRP OF \$20,330. (6) NITRO: 20% DISCOUNT OFF MSRP BASED ON MSRP OF \$26,015. (7) PATRIOT: 15% DISCOUNT OFF MSRP BASED ON MSRP OF \$23,750. (8) JOURNEY: 15% DISCOUNT OFF MSRP BASED ON MSRP OF \$23,750. (9) LIBERTY: 20% DISCOUNT OFF MSRP BASED ON MSRP OF \$26,015. (10) SEBRING LX: 15% DISCOUNT OFF MSRP BASED ON MSRP OF \$20,330. (11) AVENGER: 15% DISCOUNT OFF MSRP BASED ON MSRP OF \$20,330. (12) RAM: 40% DISCOUNT OFF MSRP BASED ON MSRP OF \$35,175. (13) CHARGER: 18% DISCOUNT OFF MSRP BASED ON MSRP OF \$27,245. (14) GRAND CARAVAN AND TOWN & COUNTRY: 25% DISCOUNT OFF MSRP BASED ON MSRP OF \$28,500. (15) AVENGER: 15% DISCOUNT OFF MSRP BASED ON MSRP OF \$20,330. (16) SEBRING LX: 15% DISCOUNT OFF MSRP BASED ON MSRP OF \$20,330. (17) NITRO: 20% DISCOUNT OFF MSRP BASED ON MSRP OF \$26,015. (18) PATRIOT: 15% DISCOUNT OFF MSRP BASED ON MSRP OF \$23,750. (19) JOURNEY: 15% DISCOUNT OFF MSRP BASED ON MSRP OF \$23,750. (20) LIBERTY: 20% DISCOUNT OFF MSRP BASED ON MSRP OF \$26,015. (21) SEBRING LX: 15% DISCOUNT OFF MSRP BASED ON MSRP OF \$20,330. (22) AVENGER: 15% DISCOUNT OFF MSRP BASED ON MSRP OF \$20,330. (23) RAM: 40% DISCOUNT OFF MSRP BASED ON MSRP OF \$35,175. (24) CHARGER: 18% DISCOUNT OFF MSRP BASED ON MSRP OF \$27,245. (25) GRAND CARAVAN AND TOWN & COUNTRY: 25% DISCOUNT OFF MSRP BASED ON MSRP OF \$28,500. (26) AVENGER: 15% DISCOUNT OFF MSRP BASED ON MSRP OF \$20,330. (27) SEBRING LX: 15% DISCOUNT OFF MSRP BASED ON MSRP OF \$20,330. (28) NITRO: 20% DISCOUNT OFF MSRP BASED ON MSRP OF \$26,015. (29) PATRIOT: 15% DISCOUNT OFF MSRP BASED ON MSRP OF \$23,750. (30) JOURNEY: 15% DISCOUNT OFF MSRP BASED ON MSRP OF \$23,750. (31) LIBERTY: 20% DISCOUNT OFF MSRP BASED ON MSRP OF \$26,015. (32) SEBRING LX: 15% DISCOUNT OFF MSRP BASED ON MSRP OF \$20,330. (33) AVENGER: 15% DISCOUNT OFF MSRP BASED ON MSRP OF \$20,330. (34) RAM: 40% DISCOUNT OFF MSRP BASED ON MSRP OF \$35,175. (35) CHARGER: 18% DISCOUNT OFF MSRP BASED ON MSRP OF \$27,245. (36) GRAND CARAVAN AND TOWN & COUNTRY: 25% DISCOUNT OFF MSRP BASED ON MSRP OF \$28,500. (37) AVENGER: 15% DISCOUNT OFF MSRP BASED ON MSRP OF \$20,330. (38) SEBRING LX: 15% DISCOUNT OFF MSRP BASED ON MSRP OF \$20,330. (39) NITRO: 20% DISCOUNT OFF MSRP BASED ON MSRP OF \$26,015. (40) PATRIOT: 15% DISCOUNT OFF MSRP BASED ON MSRP OF \$23,750. (41) JOURNEY: 15% DISCOUNT OFF MSRP BASED ON MSRP OF \$23,750. (42) LIBERTY: 20% DISCOUNT OFF MSRP BASED ON MSRP OF \$26,015. (43) SEBRING LX: 15% DISCOUNT OFF MSRP BASED ON MSRP OF \$20,330. (44) AVENGER: 15% DISCOUNT OFF MSRP BASED ON MSRP OF \$20,330. (45) RAM: 40% DISCOUNT OFF MSRP BASED ON MSRP OF \$35,175. (46) CHARGER: 18% DISCOUNT OFF MSRP BASED ON MSRP OF \$27,245. (47) GRAND CARAVAN AND TOWN & COUNTRY: 25% DISCOUNT OFF MSRP BASED ON MSRP OF \$28,500. (48) AVENGER: 15% DISCOUNT OFF MSRP BASED ON MSRP OF \$20,330. (49) SEBRING LX: 15% DISCOUNT OFF MSRP BASED ON MSRP OF \$20,330. (50) NITRO: 20% DISCOUNT OFF MSRP BASED ON MSRP OF \$26,015. (51) PATRIOT: 15% DISCOUNT OFF MSRP BASED ON MSRP OF \$23,750. (52) JOURNEY: 15% DISCOUNT OFF MSRP BASED ON MSRP OF \$23,750. (53) LIBERTY: 20% DISCOUNT OFF MSRP BASED ON MSRP OF \$26,015. (54) SEBRING LX: 15% DISCOUNT OFF MSRP BASED ON MSRP OF \$20,330. (55) AVENGER: 15% DISCOUNT OFF MSRP BASED ON MSRP OF \$20,330. (56) RAM: 40% DISCOUNT OFF MSRP BASED ON MSRP OF \$35,175. (57) CHARGER: 18% DISCOUNT OFF MSRP BASED ON MSRP OF \$27,245. (58) GRAND CARAVAN AND TOWN & COUNTRY: 25% DISCOUNT OFF MSRP BASED ON MSRP OF \$28,500. (59) AVENGER: 15% DISCOUNT OFF MSRP BASED ON MSRP OF \$20,330. (60) SEBRING LX: 15% DISCOUNT OFF MSRP BASED ON MSRP OF \$20,330. (61) NITRO: 20% DISCOUNT OFF MSRP BASED ON MSRP OF \$26,015. (62) PATRIOT: 15% DISCOUNT OFF MSRP BASED ON MSRP OF \$23,750. (63) JOURNEY: 15% DISCOUNT OFF MSRP BASED ON MSRP OF \$23,750. (64) LIBERTY: 20% DISCOUNT OFF MSRP BASED ON MSRP OF \$26,015. (65) SEBRING LX: 15% DISCOUNT OFF MSRP BASED ON MSRP OF \$20,330. (66) AVENGER: 15% DISCOUNT OFF MSRP BASED ON MSRP OF \$20,330. (67) RAM: 40% DISCOUNT OFF MSRP BASED ON MSRP OF \$35,175. (68) CHARGER: 18% DISCOUNT OFF MSRP BASED ON MSRP OF \$27,245. (69) GRAND CARAVAN AND TOWN & COUNTRY: 25% DISCOUNT OFF MSRP BASED ON MSRP OF \$28,500. (70) AVENGER: 15% DISCOUNT OFF MSRP BASED ON MSRP OF \$20,330. (71) SEBRING LX: 15% DISCOUNT OFF MSRP BASED ON MSRP OF \$20,330. (72) NITRO: 20% DISCOUNT OFF MSRP BASED ON MSRP OF \$26,015. (73) PATRIOT: 15% DISCOUNT OFF MSRP BASED ON MSRP OF \$23,750. (74) JOURNEY: 15% DISCOUNT OFF MSRP BASED ON MSRP OF \$23,750. (75) LIBERTY: 20% DISCOUNT OFF MSRP BASED ON MSRP OF \$26,015. (76) SEBRING LX: 15% DISCOUNT OFF MSRP BASED ON MSRP OF \$20,330. (77) AVENGER: 15% DISCOUNT OFF MSRP BASED ON MSRP OF \$20,330. (78) RAM: 40% DISCOUNT OFF MSRP BASED ON MSRP OF \$35,175. (79) CHARGER: 18% DISCOUNT OFF MSRP BASED ON MSRP OF \$27,245. (80) GRAND CARAVAN AND TOWN & COUNTRY: 25% DISCOUNT OFF MSRP BASED ON MSRP OF \$28,500. (81) AVENGER: 15% DISCOUNT OFF MSRP BASED ON MSRP OF \$20,330. (82) SEBRING LX: 15% DISCOUNT OFF MSRP BASED ON MSRP OF \$20,330. (83) NITRO: 20% DISCOUNT OFF MSRP BASED ON MSRP OF \$26,015. (84) PATRIOT: 15% DISCOUNT OFF MSRP BASED ON MSRP OF \$23,750. (85) JOURNEY: 15% DISCOUNT OFF MSRP BASED ON MSRP OF \$23,750. (86) LIBERTY: 20% DISCOUNT OFF MSRP BASED ON MSRP OF \$26,015. (87) SEBRING LX: 15% DISCOUNT OFF MSRP BASED ON MSRP OF \$20,330. (88) AVENGER: 15% DISCOUNT OFF MSRP BASED ON MSRP OF \$20,330. (89) RAM: 40% DISCOUNT OFF MSRP BASED ON MSRP OF \$35,175. (90) CHARGER: 18% DISCOUNT OFF MSRP BASED ON MSRP OF \$27,245. (91) GRAND CARAVAN AND TOWN & COUNTRY: 25% DISCOUNT OFF MSRP BASED ON MSRP OF \$28,500. (92) AVENGER: 15% DISCOUNT OFF MSRP BASED ON MSRP OF \$20,330. (93) SEBRING LX: 15% DISCOUNT OFF MSRP BASED ON MSRP OF \$20,330. (94) NITRO: 20% DISCOUNT OFF MSRP BASED ON MSRP OF \$26,015. (95) PATRIOT: 15% DISCOUNT OFF MSRP BASED ON MSRP OF \$23,750. (96) JOURNEY: 15% DISCOUNT OFF MSRP BASED ON MSRP OF \$23,750. (97) LIBERTY: 20% DISCOUNT OFF MSRP BASED ON MSRP OF \$26,015. (98) SEBRING LX: 15% DISCOUNT OFF MSRP BASED ON MSRP OF \$20,330. (99) AVENGER: 15% DISCOUNT OFF MSRP BASED ON MSRP OF \$20,330. (100) RAM: 40% DISCOUNT OFF MSRP BASED ON MSRP OF \$35,175. (101) CHARGER: 18% DISCOUNT OFF MSRP BASED ON MSRP OF \$27,245. (102) GRAND CARAVAN AND TOWN & COUNTRY: 25% DISCOUNT OFF MSRP BASED ON MSRP OF \$28,500. (103) AVENGER: 15% DISCOUNT OFF MSRP BASED ON MSRP OF \$20,330. (104) SEBRING LX: 15% DISCOUNT OFF MSRP BASED ON MSRP OF \$20,330. (105) NITRO: 20% DISCOUNT OFF MSRP BASED ON MSRP OF \$26,015. (106) PATRIOT: 15% DISCOUNT OFF MSRP BASED ON MSRP OF \$23,750. (107) JOURNEY: 15% DISCOUNT OFF MSRP BASED ON MSRP OF \$23,750. (108) LIBERTY: 20% DISCOUNT OFF MSRP BASED ON MSRP OF \$26,015. (109) SEBRING LX: 15% DISCOUNT OFF MSRP BASED ON MSRP OF \$20,330. (110) AVENGER: 15% DISCOUNT OFF MSRP BASED ON MSRP OF \$20,330. (111) RAM: 40% DISCOUNT OFF MSRP BASED ON MSRP OF \$35,175. (112) CHARGER: 18% DISCOUNT OFF MSRP BASED ON MSRP OF \$27,245. (113) GRAND CARAVAN AND TOWN & COUNTRY: 25% DISCOUNT OFF MSRP BASED ON MSRP OF \$28,500. (114) AVENGER: 15% DISCOUNT OFF MSRP BASED ON MSRP OF \$20,330. (115) SEBRING LX: 15% DISCOUNT OFF MSRP BASED ON MSRP OF \$20,330. (116) NITRO: 20% DISCOUNT OFF MSRP BASED ON MSRP OF \$26,015. (117) PATRIOT: 15% DISCOUNT OFF MSRP BASED ON MSRP OF \$23,750. (118) JOURNEY: 15% DISCOUNT OFF MSRP BASED ON MSRP OF \$23,750. (119) LIBERTY: 20% DISCOUNT OFF MSRP BASED ON MSRP OF \$26,015. (120) SEBRING LX: 15% DISCOUNT OFF MSRP BASED ON MSRP OF \$20,330. (121) AVENGER: 15% DISCOUNT OFF MSRP BASED ON MSRP OF \$20,330. (122) RAM: 40% DISCOUNT OFF MSRP BASED ON MSRP OF \$35,175. (123) CHARGER: 18% DISCOUNT OFF MSRP BASED ON MSRP OF \$27,245. (124) GRAND CARAVAN AND TOWN & COUNTRY: 25% DISCOUNT OFF MSRP BASED ON MSRP OF \$28,500. (125) AVENGER: 15% DISCOUNT OFF MSRP BASED ON MSRP OF \$20,330. (126) SEBRING LX: 15% DISCOUNT OFF MSRP BASED ON MSRP OF \$20,330. (127) NITRO: 20% DISCOUNT OFF MSRP BASED ON MSRP OF \$26,015. (128) PATRIOT: 15% DISCOUNT OFF MSRP BASED ON MSRP OF \$23,750. (129) JOURNEY: 15% DISCOUNT OFF MSRP BASED ON MSRP OF \$23,750. (130) LIBERTY: 20% DISCOUNT OFF MSRP BASED ON MSRP OF \$26,015. (131) SEBRING LX: 15% DISCOUNT OFF MSRP BASED ON MSRP OF \$20,330. (132) AVENGER: 15% DISCOUNT OFF MSRP BASED ON MSRP OF \$20,330. (133) RAM: 40% DISCOUNT OFF MSRP BASED ON MSRP OF \$35,175. (134) CHARGER: 18% DISCOUNT OFF MSRP BASED ON MSRP OF \$27,245. (135) GRAND CARAVAN AND TOWN & COUNTRY: 25% DISCOUNT OFF MSRP BASED ON MSRP OF \$28,500. (136) AVENGER: 15% DISCOUNT OFF MSRP BASED ON MSRP OF \$20,330. (137) SEBRING LX: 15% DISCOUNT OFF MSRP BASED ON MSRP OF \$20,330. (138) NITRO: 20% DISCOUNT OFF MSRP BASED ON MSRP OF \$26,015. (139) PATRIOT: 15% DISCOUNT OFF MSRP BASED ON MSRP OF \$23,750. (140) JOURNEY: 15% DISCOUNT OFF MSRP BASED ON MSRP OF \$23,750. (141) LIBERTY: 20% DISCOUNT OFF MSRP BASED ON MSRP OF \$26,015. (142) SEBRING LX: 15% DISCOUNT OFF MSRP BASED ON MSRP OF \$20,330. (143) AVENGER: 15% DISCOUNT OFF MSRP BASED ON MSRP OF \$20,330. (144) RAM: 40% DISCOUNT OFF MSRP BASED ON MSRP OF \$35,175. (145) CHARGER: 18% DISCOUNT OFF MSRP BASED ON MSRP OF \$27,245. (146) GRAND CARAVAN AND TOWN & COUNTRY: 25% DISCOUNT OFF MSRP BASED ON MSRP OF \$28,500. (147) AVENGER: 15% DISCOUNT OFF MSRP BASED ON MSRP OF \$20,330. (148) SEBRING LX: 15% DISCOUNT OFF MSRP BASED ON MSRP OF \$20,330. (149) NITRO: 20% DISCOUNT OFF MSRP BASED ON MSRP OF \$26,015. (150) PATRIOT: 15% DISCOUNT OFF MSRP BASED ON MSRP OF \$23,750. (151) JOURNEY: 15% DISCOUNT OFF MSRP BASED ON MSRP OF \$23,750. (152) LIBERTY: 20% DISCOUNT OFF MSRP BASED ON MSRP OF \$26,015. (153) SEBRING LX: 15% DISCOUNT OFF MSRP BASED ON MSRP OF \$20,330. (154) AVENGER: 15% DISCOUNT OFF MSRP BASED ON MSRP OF \$20,330. (155) RAM: 40% DISCOUNT OFF MSRP BASED ON MSRP OF \$35,175. (156) CHARGER: 18% DISCOUNT OFF MSRP BASED ON MSRP OF \$27,245. (157) GRAND CARAVAN AND TOWN & COUNTRY: 25% DISCOUNT OFF MSRP BASED ON MSRP OF \$28,500. (158) AVENGER: 15% DISCOUNT OFF MSRP BASED ON MSRP OF \$20,330. (159) SEBRING LX: 15% DISCOUNT OFF MSRP BASED ON MSRP OF \$20,330. (160) NITRO: 20% DISCOUNT OFF MSRP BASED ON MSRP OF \$26,015. (161) PATRIOT: 15% DISCOUNT OFF MSRP BASED ON MSRP OF \$23,750. (162) JOURNEY: 15% DISCOUNT OFF MSRP BASED ON MSRP OF \$23,750. (163) LIBERTY: 20% DISCOUNT OFF MSRP BASED ON MSRP OF \$26,015. (164) SEBRING LX: 15% DISCOUNT OFF MSRP BASED ON MSRP OF \$20,330. (165) AVENGER: 15% DISCOUNT OFF MSRP BASED ON MSRP OF \$20,330. (166) RAM: 40% DISCOUNT OFF MSRP BASED ON MSRP OF \$35,175. (167) CHARGER: 18% DISCOUNT OFF MSRP BASED ON MSRP OF \$27,245. (168) GRAND CARAVAN AND TOWN & COUNTRY: 25% DISCOUNT OFF MSRP BASED ON MSRP OF \$28,500. (169) AVENGER: 15% DISCOUNT OFF MSRP BASED ON MSRP OF \$20,330. (170) SEBRING LX: 15% DISCOUNT OFF MSRP BASED ON MSRP OF \$20,330. (171) NITRO: 20% DISCOUNT OFF MSRP BASED ON MSRP OF \$26,015. (172) PATRIOT: 15% DISCOUNT OFF MSRP BASED ON MSRP OF \$23,750. (173) JOURNEY: 15% DISCOUNT OFF MSRP BASED ON MSRP OF \$23,750. (174) LIBERTY: 20% DISCOUNT OFF MSRP BASED ON MSRP OF \$26,015. (175) SEBRING LX: 15% DISCOUNT OFF MSRP BASED ON MSRP OF \$20,330. (176) AVENGER: 15% DISCOUNT OFF MSRP BASED ON MSRP OF \$20,330. (177) RAM: 40% DISCOUNT OFF MSRP BASED ON MSRP OF \$35,175. (178) CHARGER: 18% DISCOUNT OFF MSRP BASED ON MSRP OF \$27,245. (179) GRAND CARAVAN AND TOWN & COUNTRY: 25% DISCOUNT OFF MSRP BASED ON MSRP OF \$28,500. (180) AVENGER: 15% DISCOUNT OFF MSRP BASED ON MSRP OF \$20,330. (181) SEBRING LX: 15% DISCOUNT OFF MSRP BASED ON MSRP OF \$20,330. (182) NITRO: 20% DISCOUNT OFF MSRP BASED ON MSRP OF \$26,015. (183) PATRIOT: 15% DISCOUNT OFF MSRP BASED ON MSRP OF \$23,750. (184) JOURNEY: 15% DISCOUNT OFF MSRP BASED ON MSRP OF \$23,750. (185) LIBERTY: 20% DISCOUNT OFF MSRP BASED ON MSRP OF \$26,015. (186) SEBRING LX: 15% DISCOUNT OFF MSRP BASED ON MSRP OF \$20,330. (187) AVENGER: 15% DISCOUNT OFF MSRP BASED ON MSRP OF \$20,330. (188) RAM: 40% DISCOUNT OFF MSRP BASED ON MSRP OF \$35,175. (189) CHARGER: 18% DISCOUNT OFF MSRP BASED ON MSRP OF \$27,245. (190) GRAND CARAVAN AND TOWN & COUNTRY: 25% DISCOUNT OFF MSRP BASED ON MSRP OF \$28,500. (191) AVENGER: 15% DISCOUNT OFF MSRP BASED ON MSRP OF \$20,330. (192) SEBRING LX: 15% DISCOUNT OFF MSRP BASED ON MSRP OF \$20,330. (193) NITRO: 20% DISCOUNT OFF MSRP BASED ON MSRP OF \$26,015. (194) PATRIOT: 15% DISCOUNT OFF MSRP BASED ON MSRP OF \$23,750. (195) JOURNEY: 15% DISCOUNT OFF MSRP BASED ON MSRP OF \$23,750. (196) LIBERTY: 20% DISCOUNT OFF MSRP BASED ON MSRP OF \$26,015. (197) SEBRING LX: 15% DISCOUNT OFF MSRP BASED ON MSRP OF \$20,330. (198) AVENGER: 15% DISCOUNT OFF MSRP BASED ON MSRP OF \$20,330. (199) RAM: 40% DISCOUNT OFF MSRP BASED ON MSRP OF \$35,175. (200) CHARGER: 18% DISCOUNT OFF MSRP BASED ON MSRP OF \$27,245. (201) GRAND CARAVAN AND TOWN & COUNTRY: 25% DISCOUNT OFF MSRP BASED ON MSRP OF \$28,500. (202) AVENGER: 15% DISCOUNT OFF MSRP BASED ON MSRP OF \$20,330. (203) SEBRING LX: 15% DISCOUNT OFF MSRP BASED ON MSRP OF \$20,330. (204) NITRO: 20% DISCOUNT OFF MSRP BASED ON MSRP OF \$26,015. (205) PATRIOT: 15% DISCOUNT OFF MSRP BASED ON MSRP OF \$23,750. (206) JOURNEY: 15% DISCOUNT OFF MSRP BASED ON MSRP OF \$23,750. (207) LIBERTY: 20% DISCOUNT OFF MSRP BASED ON MSRP OF \$26,015. (208) SEBRING LX: 15% DISCOUNT OFF MSRP BASED ON MSRP OF \$20,330. (209) AVENGER: 15% DISCOUNT OFF MSRP BASED ON MSRP OF \$20,330. (210) RAM: 40% DISCOUNT OFF MSRP BASED ON MSRP OF \$35,175. (211) CHARGER: 18% DISCOUNT OFF MSRP BASED ON MSRP OF \$27,245. (212) GRAND CARAVAN AND TOWN & COUNTRY: 25% DISCOUNT OFF MSRP BASED ON MSRP OF \$28,500. (213) AVENGER: 15% DISCOUNT OFF MSRP BASED ON MSRP OF \$20,330. (214) SEBRING LX: 15% DISCOUNT OFF MSRP BASED ON MSRP OF \$20,330. (215) NITRO: 20% DISCOUNT OFF MSRP BASED ON MSRP OF \$26,015. (216) PATRIOT: 15% DISCOUNT OFF MSRP BASED ON MSRP OF \$23,750. (217) JOURNEY: 15% DISCOUNT OFF MSRP BASED ON MSRP OF \$23,750. (218) LIBERTY: 20% DISCOUNT OFF MSRP BASED ON MSRP OF \$26,015. (219) SEBRING LX: 15% DISCOUNT OFF MSRP BASED ON MSRP OF \$20,330. (220) AVENGER: 15% DISCOUNT OFF MSRP BASED ON MSRP OF \$20,330. (221) RAM: 40% DISCOUNT OFF MSRP BASED ON MSRP OF \$35,175. (222) CHARGER: 18% DISCOUNT OFF MSRP BASED ON MSRP OF \$27,245. (223) GRAND CARAVAN AND TOWN & COUNTRY: 25% DISCOUNT OFF MSRP BASED ON MSRP OF \$28,500. (224) AVENGER: 15% DISCOUNT OFF MSRP BASED ON MSRP OF \$20,330. (225) SEBRING LX: 15% DISCOUNT OFF MSRP BASED ON MSRP OF \$20,330. (226) NITRO: 20% DISCOUNT OFF MSRP BASED ON MSRP OF \$26,015. (227) PATRIOT: 15% DISCOUNT OFF MSRP BASED ON MSRP OF \$23,750. (228) JOURNEY: 15% DISCOUNT OFF MSRP BASED ON MSRP OF \$23,750. (229) LIBERTY: 20% DISCOUNT OFF MSRP BASED ON MSRP OF \$26,015. (230) SEBRING LX: 15% DISCOUNT OFF MSRP BASED ON MSRP OF \$20,330. (231) AVENGER: 15% DISCOUNT OFF MSRP BASED ON MSRP OF \$20,330. (232) RAM: 40% DISCOUNT OFF MSRP BASED ON MSRP OF \$35,175. (233) CHARGER: 18% DISCOUNT OFF MSRP BASED ON MSRP OF \$27,245. (234) GRAND CARAVAN AND TOWN & COUNTRY: 25% DISCOUNT OFF MSRP BASED ON MSRP OF \$28,500. (235) AVENGER: 15% DISCOUNT OFF MSRP BASED ON MSRP OF \$20,330. (236) SEBRING LX: 15% DISCOUNT OFF MSRP BASED ON MSRP OF \$20,330. (237) NITRO: 20% DISCOUNT OFF MSRP BASED ON MSRP OF \$26,015. (238) PATRIOT: 15% DISCOUNT OFF MSRP BASED ON MSRP OF \$23,750. (239) JOURNEY: 15% DISCOUNT OFF MSRP BASED ON MSRP OF \$23,750. (240) LIBERTY: 20% DISCOUNT OFF MSRP BASED ON MSRP OF \$26,015. (241) SEBRING LX: 15% DISCOUNT OFF MSRP BASED ON MSRP OF \$20,330. (242) AVENGER: 15% DISCOUNT OFF MSRP BASED ON MSRP OF \$20,330. (243) RAM: 40% DISCOUNT OFF MSRP BASED ON MSRP OF \$35,175. (244) CHARGER: 18% DISCOUNT OFF MSRP BASED ON MSRP OF \$27,245. (245) GRAND CARAVAN AND TOWN & COUNTRY: 25% DISCOUNT OFF MSRP BASED ON MSRP OF \$28,500. (246) AVENGER: 15% DISCOUNT OFF MSRP BASED ON MSRP OF \$20,330. (247) SEBRING LX: 15% DISCOUNT OFF MSRP BASED ON MSRP OF \$20,330. (248) NITRO: 20% DISCOUNT OFF MSRP BASED ON MSRP OF \$26,015. (249) PATRIOT: 15% DISCOUNT OFF MSRP BASED ON MSRP OF \$23,750. (250) JOURNEY: 15% DISCOUNT OFF MSRP BASED ON MSRP OF \$23,750. (251) LIBERTY: 20% DISCOUNT OFF MSRP BASED ON MSRP OF \$26,015. (252) SEBRING LX: 15% DISCOUNT OFF MSRP BASED ON MSRP OF \$20,330. (253) AVENGER: 15% DISCOUNT OFF MSRP BASED ON MSRP OF \$20,330. (254) RAM: 40% DISCOUNT OFF MSRP BASED ON MSRP OF \$35,175. (255) CHARGER: 18% DISCOUNT OFF MSRP BASED ON MSRP OF \$27,245. (256) GRAND CARAVAN AND TOWN & COUNTRY: 25% DISCOUNT OFF MSRP BASED ON MSRP OF \$28,500. (257) AVENGER: 15% DISCOUNT OFF MSRP BASED ON MSRP OF \$20,330. (258) SEBRING LX: 15% DISCOUNT OFF MSRP BASED ON MSRP OF \$20,330. (259) NITRO: 20% DISCOUNT OFF MSRP BASED ON MSRP OF \$26,015. (260) PATRIOT: 15% DISCOUNT OFF MSRP BASED ON MSRP OF \$23,750. (261) JOURNEY: 15% DISCOUNT OFF MSRP BASED ON MSRP OF \$23,750. (262) LIBERTY: 20% DISCOUNT OFF MSRP BASED ON MSRP OF \$26,015. (263) SEBRING LX: 15% DISCOUNT OFF MSRP BASED ON MSRP OF \$20,330. (264) AVENGER: 15% DISCOUNT OFF MSRP BASED ON MSRP OF \$20,330. (265) RAM: 40% DISCOUNT OFF MSRP BASED ON MSRP OF \$35,175. (266) CHARGER: 18% DISCOUNT OFF MSRP BASED ON MSRP OF \$27,245. (267) GRAND CARAVAN AND TOWN & COUNTRY: 25% DISCOUNT OFF MSRP BASED ON MSRP OF \$28,500. (268) AVENGER: 15% DISCOUNT OFF MSRP BASED ON MSRP OF \$20,330. (269) SEBRING LX: 15% DISCOUNT OFF MSRP BASED ON MSRP OF \$20,330. (270) NITRO: 20% DISCOUNT OFF MSRP BASED ON MSRP OF \$26,015. (271) PATRIOT: 15% DISCOUNT OFF MSRP BASED ON MSRP OF \$23,750. (272) JOURNEY: 15% DISCOUNT OFF MSRP BASED ON MSRP OF \$23,750. (273) LIBERTY: 20% DISCOUNT OFF MSRP BASED ON MSRP OF \$26,015. (274) SEBRING LX: 15% DISCOUNT OFF MSRP BASED ON MSRP OF \$20,330. (275) AVENGER: 15% DISCOUNT OFF MSRP BASED ON MSRP OF \$20,330. (276) RAM: 40% DISCOUNT OFF MSRP BASED ON MSRP OF \$35,175. (277) CHARGER: 18% DISCOUNT OFF MSRP BASED ON MSRP OF \$27,245. (278) GRAND CARAVAN AND TOWN & COUNTRY: 25% DISCOUNT OFF MSRP BASED ON MSRP OF \$28,500. (279) AVENGER: 15% DISCOUNT OFF MSRP BASED ON MSRP OF \$20,330. (280) SEBRING LX: 15% DISCOUNT OFF MSRP BASED ON MSRP OF \$20,330. (281) NITRO: 20% DISCOUNT OFF MSRP BASED ON MSRP OF \$26,015. (